

SOUTH AUSTRALIAN ECONOMIC INDICATORS

EMBARGO: 11:30AM (CANBERRA TIME) FRI 19 DEC 2003

C O N T E N T S

| | <i>page</i> |
|-----------------------------------|-------------|
| Notes..... | 2 |
| | |
| REVIEW | |
| Overview | 3 |
| Selected features | 4 |
| | |
| TABLES | |
| List of tables | 5 |
| Statistical summary | 6 |
| State summary | 8 |
| State accounts | 9 |
| International trade | 10 |
| Consumption and investment | 13 |
| Production | 15 |
| Consumer price index | 19 |
| Labour force and demography | 20 |
| Average weekly earnings | 23 |
| Financial markets | 24 |
| | |
| ADDITIONAL INFORMATION | |
| Sources for summary tables | 25 |

I N Q U I R I E S

- For further information about these and related statistics, contact Felicité McCracken on Adelaide (08) 8237 7604 or the National Information and Referral Service on 1300 135 070.

NOTES

| FORTHCOMING ISSUES | <table border="0"> <thead> <tr> <th style="text-align: left;"><i>ISSUE</i></th> <th style="text-align: left;"><i>RELEASE DATE</i></th> </tr> </thead> <tbody> <tr> <td>February 2004</td> <td>2 February 2004</td> </tr> <tr> <td>March 2004</td> <td>1 March 2004</td> </tr> <tr> <td>April 2004</td> <td>1 April 2004</td> </tr> <tr> <td>May 2004</td> <td>3 May 2004</td> </tr> <tr> <td>June 2004</td> <td>1 June 2004</td> </tr> <tr> <td>July 2004</td> <td>1 July 2004</td> </tr> </tbody> </table> | <i>ISSUE</i> | <i>RELEASE DATE</i> | February 2004 | 2 February 2004 | March 2004 | 1 March 2004 | April 2004 | 1 April 2004 | May 2004 | 3 May 2004 | June 2004 | 1 June 2004 | July 2004 | 1 July 2004 | | |
|----------------------------------|--|--------------|--|---------------|-----------------|------------|---------------|------------|-------------------|----------|------------|-----------|--|-----------|----------------|--------|-------------------------|
| <i>ISSUE</i> | <i>RELEASE DATE</i> | | | | | | | | | | | | | | | | |
| February 2004 | 2 February 2004 | | | | | | | | | | | | | | | | |
| March 2004 | 1 March 2004 | | | | | | | | | | | | | | | | |
| April 2004 | 1 April 2004 | | | | | | | | | | | | | | | | |
| May 2004 | 3 May 2004 | | | | | | | | | | | | | | | | |
| June 2004 | 1 June 2004 | | | | | | | | | | | | | | | | |
| July 2004 | 1 July 2004 | | | | | | | | | | | | | | | | |
| ABOUT THIS PUBLICATION | <p><i>South Australian Economic Indicators</i> is a monthly publication which contains the latest available data at the time of preparation for a range of statistical series that have been identified as indicators of economic activity in this state. In a number of cases the figures presented are preliminary and subject to revision in subsequent issues.</p> | | | | | | | | | | | | | | | | |
| CHANGES IN THIS ISSUE | <p>Due to recent changes in the available data for <i>Australian National Accounts: National Income, Expenditure and Product</i> (cat. no. 5206.0), the state and national figures for Domestic final demand displayed in table 1 are now published in chain volume measures only.</p> | | | | | | | | | | | | | | | | |
| SYMBOLS AND OTHER USAGES | <table border="0"> <tr> <td>\$b</td> <td>billion dollars (one thousand million)</td> </tr> <tr> <td>\$m</td> <td>million dollars</td> </tr> <tr> <td>n.a.</td> <td>not available</td> </tr> <tr> <td>n.y.a.</td> <td>not yet available</td> </tr> <tr> <td>qtr</td> <td>quarter</td> </tr> <tr> <td>*</td> <td>subject to sampling variability too high for most practical purposes</td> </tr> <tr> <td>..</td> <td>not applicable</td> </tr> <tr> <td>0, 0.0</td> <td>nil, or rounded to zero</td> </tr> </table> | \$b | billion dollars (one thousand million) | \$m | million dollars | n.a. | not available | n.y.a. | not yet available | qtr | quarter | * | subject to sampling variability too high for most practical purposes | .. | not applicable | 0, 0.0 | nil, or rounded to zero |
| \$b | billion dollars (one thousand million) | | | | | | | | | | | | | | | | |
| \$m | million dollars | | | | | | | | | | | | | | | | |
| n.a. | not available | | | | | | | | | | | | | | | | |
| n.y.a. | not yet available | | | | | | | | | | | | | | | | |
| qtr | quarter | | | | | | | | | | | | | | | | |
| * | subject to sampling variability too high for most practical purposes | | | | | | | | | | | | | | | | |
| .. | not applicable | | | | | | | | | | | | | | | | |
| 0, 0.0 | nil, or rounded to zero | | | | | | | | | | | | | | | | |
| ROUNDING | <p>Where figures have been rounded, discrepancies may occur between sums of the component items and totals.</p> | | | | | | | | | | | | | | | | |
| INFORMATION | <p>More detailed information on each series, including explanatory and technical notes, can be obtained from other Australian Bureau of Statistics publications or alternative data sources. To assist those seeking further information, publication source numbers are shown in tables 1 and 2, as a reference to the source of summary tables section on page 25.</p> | | | | | | | | | | | | | | | | |
| IMPORTANT NOTE FOR FUTURE ISSUES | <p>This is the last edition of <i>South Australian Economic Indicators</i> that will be published in hard copy. All future issues will be available in electronic form only and can be found on the Australian Bureau of Statistics web site — www.abs.gov.au.</p> | | | | | | | | | | | | | | | | |

Ian Crettenden
Regional Director
South Australia

OVERVIEW

The data in this Overview are presented in trend terms, unless otherwise stated.

INTERNATIONAL TRADE

The value of South Australian merchandise exports (in original terms) for the month of October 2003 was \$651.6m. This was a decrease of 2.8% over September 2003 and was 5.0% less than the value of exports in October 2002 (\$685.9m).

The value of South Australian merchandise imports (in original terms) for October 2003 was \$443.8m. This was an increase of 2.4% from \$433.5m recorded in September 2003 and 19.3% less than the October 2002 figure of \$549.9m.

CONSUMPTION AND INVESTMENT

In the twelve months to October 2003, retail turnover increased by 2.9% to \$1,112.6m. This was also an increase of 0.1% from the September 2003 figure of \$1,111.2m.

October 2003 saw a total of 5,439 new motor vehicle sales—an increase of 1.0% on the previous month's figure of 5,383 vehicles, and 22.4% higher than the 4,444 vehicles recorded in October 2002.

Private new capital expenditure in the September quarter was \$956m, an increase of 16.4% on the September quarter 2002, and a decrease of 16.4% over the June quarter 2003. Expenditure for the financial year 2002–03 was \$4,020m, an increase of 29.1% over the previous financial year.

HOUSING

In October 2003 the estimated number of dwelling units approved in South Australia was 984, 29 units more than for the same period last year. The trend for private sector houses has continued to rise for the last six months.

CONSUMER PRICE INDEX

The all groups consumer price index in Adelaide for the September quarter 2003 was 145.4, an increase of 3.6% on the level recorded for the September 2002 quarter and up 0.8% on the June quarter 2003.

LABOUR FORCE AND DEMOGRAPHY

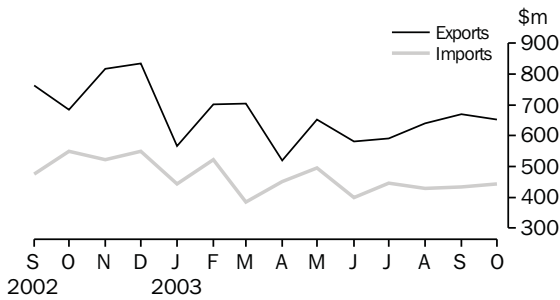
The estimate of employed persons in South Australia was 710,700 in November 2003, lower than the peak in June 2003 (718,900) but higher than the level of twelve months ago (699,000). The total number of persons employed full-time in South Australia was 492,600 in November 2003, 1.5% higher than the November 2002 estimate of 485,400. The estimate of the unemployment rate for South Australia was 6.2% in November 2003. The estimate of the participation rate in South Australia was 61.3% in November 2003 compared with 60.8% in November 2002.

FINANCIAL MARKETS

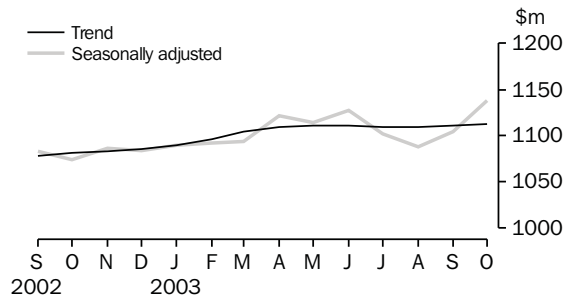
The value of secured housing finance commitments (excluding alterations and additions) was \$730.0m in October 2003. This was an increase of 3.2% over the previous month and 46.7% over the value of commitments in October 2002 (\$498.0m).

SELECTED FEATURES

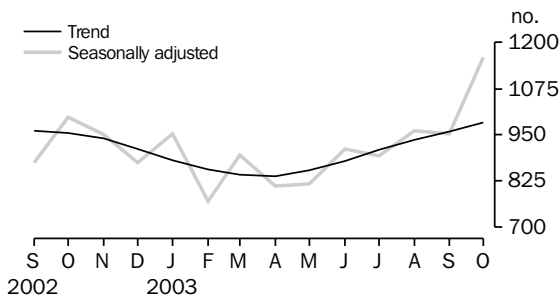
MERCHANDISE EXPORTS AND IMPORTS



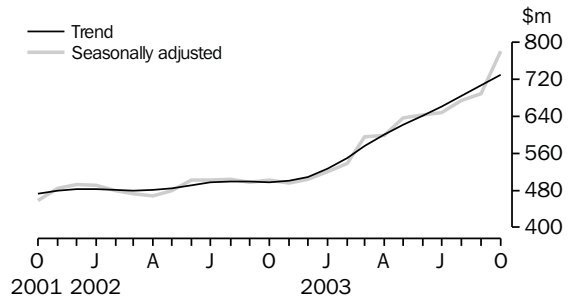
RETAIL TURNOVER



DWELLING UNITS APPROVED

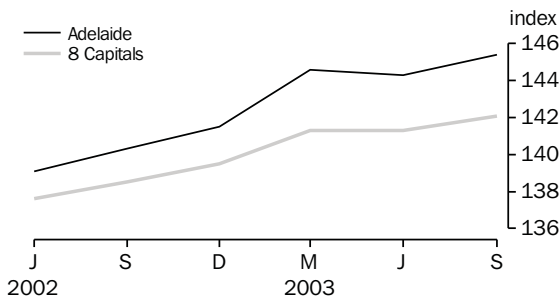


SECURED HOUSING FINANCE COMMITMENTS(a)

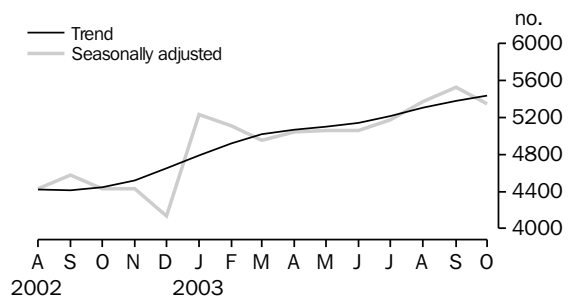


(a) Excludes alterations and additions. Includes refinancing.

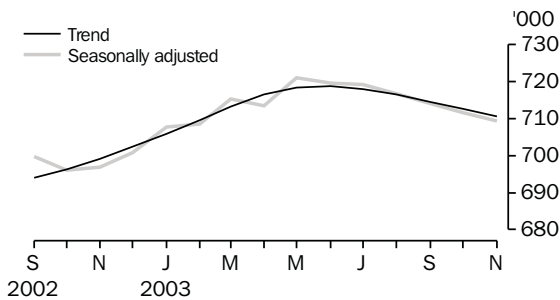
CONSUMER PRICE INDEX



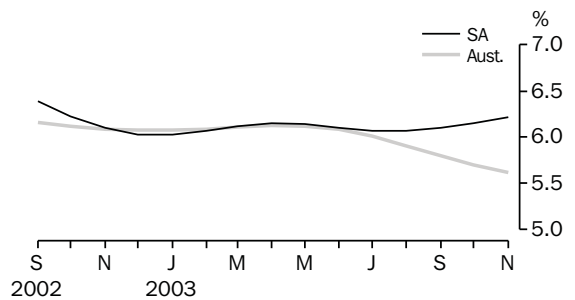
NEW MOTOR VEHICLE SALES



EMPLOYED PERSONS



UNEMPLOYMENT RATE—TREND



LIST OF TABLES

| | | | Page |
|-----------------------------|-----------|--|------|
| STATISTICAL SUMMARY | 1 | Statistical summary | 6 |
| | 2 | State summary | 8 |
| STATE ACCOUNTS | 3 | State accounts at current prices | 9 |
| | 4 | State accounts at chain volume measures | 9 |
| INTERNATIONAL TRADE | 5 | Merchandise exports, by selected commodity group | 10 |
| | 6 | Merchandise exports, by selected countries and country groups | 11 |
| | 7 | Merchandise imports, by selected commodity group | 12 |
| CONSUMPTION AND INVESTMENT | 8 | Turnover of retail establishments, by industry—trend | 13 |
| | 9 | New motor vehicle sales, by type of vehicle | 13 |
| | 10 | Actual private new capital expenditure, by selected industry and type of asset | 14 |
| | 11 | Tourist accommodation | 14 |
| PRODUCTION | 12 | Building approvals | 15 |
| | 13 | Building commencements | 16 |
| | 14 | Value of building work done and completed during period | 17 |
| | 15 | Production, livestock products and selected commodities | 18 |
| | 16 | Consumer price index, by group—Adelaide | 19 |
| LABOUR FORCE AND DEMOGRAPHY | 17 | Estimated resident population and components of population change | 20 |
| | 18 | Births, deaths, marriages and divorces | 20 |
| | 19 | Civilian labour force status | 21 |
| | 20 | Civilian labour force, unemployment and participation rates | 22 |
| AVERAGE WEEKLY EARNINGS | 21 | Average weekly earnings of employees | 23 |
| FINANCIAL MARKETS | 22 | Secured housing finance commitments | 24 |
| | 23 | Finance commitments | 24 |

| Indicator | Period | South Australia | | | Australia | | | SA as a % of Aust. | Source index |
|--|-------------|-----------------|--------------------|------------------------------------|-----------|--------------------|------------------------------------|-----------------------------|-----------------|
| | | Number | % change from | | Number | % change from | | | |
| | | | Previous period | Same period previous year | | Previous period | Same period previous year | | |
| State accounts | | | | | | | | | |
| Domestic final demand | | | | | | | | | |
| Chain volume measures trend (\$m) | Sep qtr 03 | 13 990 | 1.4 | 6.1 | 194 538 | 0.9 | 4.5 | 7.2 | (1) |
| Private final consumption expenditure | | | | | | | | | |
| Current prices trend (\$m) | Sep qtr 03 | 8 602 | 0.8 | 5.5 | 117 070 | 1.4 | 5.6 | 7.3 | — |
| Chain volume measures trend (\$m) | Sep qtr 03 | 8 271 | 0.5 | 3.2 | 114 120 | 1.3 | 4.2 | 7.2 | (1) |
| Private gross fixed capital formation | | | | | | | | | |
| Current prices trend (\$m) | Sep qtr 03 | 2 908 | 4.2 | 21.1 | 40 959 | 1.7 | 9.6 | 7.1 | — |
| Chain volume measures trend (\$m) | Sep qtr 03 | 2 891 | 4.2 | 21.2 | 40 155 | 1.2 | 7.9 | 7.2 | (1) |
| Compensation of employees | | | | | | | | | |
| Current prices trend (\$m) | Sep qtr 03 | 5 955 | 0.9 | 5.9 | 93 130 | 1.4 | 6.3 | 6.4 | — |
| International accounts | | | | | | | | | |
| Exports (\$m) | Oct 03 | 651.6 | -2.8 | -5.0 | 9 109.5 | 0.7 | -12.5 | 7.2 | (2) |
| Imports (\$m) | Oct 03 | 443.8 | 2.4 | -19.3 | 11 839.3 | 3.0 | -0.5 | 3.7 | (2) |
| Consumption and investment | | | | | | | | | |
| Retail turnover | | | | | | | | | |
| Current prices original (\$m) | Oct 03 | 1 169.5 | 10.6 | 7.0 | 16 013.0 | 7.8 | 9.7 | 7.3 | (3) |
| Current prices trend (\$m) | Oct 03 | 1 112.6 | 0.1 | 2.9 | 15 515.8 | 0.8 | 7.6 | 7.2 | (3) |
| Chain volume measures original (\$m) | Sep qtr 03 | 3 116.2 | -0.8 | 0.6 | 43 503.2 | 3.7 | 5.4 | 7.2 | (3) |
| New motor vehicle sales | | | | | | | | | |
| Original (no.) | Oct 03 | 5 430 | 4.0 | 20.7 | 79 225 | 1.8 | 9.5 | 6.9 | (4) |
| Trend (no.) | Oct 03 | 5 439 | 1.0 | 22.4 | 79 774 | 0.3 | 14.9 | 6.8 | (4) |
| Private new capital expenditure | | | | | | | | | |
| Current prices original (\$m) | Sep qtr 03 | 956 | -16.4 | 16.4 | 12 695 | -5.4 | 9.1 | 7.5 | (5) |
| Current prices trend (\$m) | Sep qtr 03 | 1 102 | 3.7 | 23.8 | 12 961 | 0.7 | 7.7 | 8.5 | (5) |
| Private new capital expenditure (\$m) | 2002-03 | 4 020 | 29.1 | — | 51 093 | 15.1 | — | 7.9 | (5) |
| Tourist accommodation takings (\$m) | Mar qtr 03 | 59.1 | -8.9 | 1.5 | 1 244.7 | -5.3 | 2.5 | 4.8 | (6) |
| Production | | | | | | | | | |
| Dwelling unit approvals | | | | | | | | | |
| Original (no.) | Oct 03 | 1 247 | 28.2 | 10.8 | 17 716 | 7.6 | -9.0 | 7.0 | (7) |
| Trend (no.) | Oct 03 | 984 | 2.6 | 3.0 | 16 121 | 2.1 | 5.9 | 6.1 | (7) |
| Dwelling units commenced (no.) | June qtr 03 | 2 450 | 3.6 | -7.3 | 38 658 | 1.3 | -11.4 | 6.3 | (8) |
| Value of non-residential building approvals—trend (\$m) | Oct 03 | 152.5 | 16.2 | 66.7 | 1 568.6 | 2.1 | 8.9 | 9.7 | (7) |
| Value of total building activity | | | | | | | | | |
| Commenced (\$m) | June qtr 03 | 654.2 | 15.5 | 14.1 | 11 787.8 | 1.8 | 3.5 | 5.5 | (8) |
| Work done (\$m) | June qtr 03 | 659.8 | 14.2 | 18.1 | 12 031.1 | 7.9 | 10.4 | 5.5 | (8) |
| Work yet to be done (\$m) | June qtr 03 | 1 032.6 | 3.5 | 31.7 | 20 908.8 | 1.8 | 22.4 | 4.9 | (8) |
| Value of engineering construction work done (\$m) | June qtr 03 | 499.1 | 10.5 | 29.5 | 6 871.5 | 16.4 | 21.2 | 7.3 | (9) |
| Manufacturing production | | | | | | | | | |
| Red meat trend (tonnes) | Sep qtr 03 | 54 332 | -5.4 | -13.3 | 712 179 | -3.3 | -10.7 | 7.6 | (11) |
| Mineral exploration expenditure (other than for petroleum) (\$m) | June qtr 03 | 11.0 | 83.3 | 11.1 | 203.4 | 32.6 | 20.9 | 5.4 | (12) |

| Indicator | Period | South Australia | | | Australia | | | SA as a % of Aust. | Source index |
|---|------------|-----------------|--------------------|------------------------------------|-----------|--------------------|------------------------------------|-----------------------------|-----------------|
| | | Number | % change from | | Number | % change from | | | |
| | | | Previous period | Same period previous year | | Previous period | Same period previous year | | |
| Prices(a) | | | | | | | | | |
| CPI—All groups (index no.) | Sep qtr 03 | 145.4 | 0.8 | 3.6 | 142.1 | 0.6 | 2.6 | .. | (13) |
| Price index of materials used in house building (index no.) | Sep qtr 03 | 137.4 | 0.4 | 2.2 | 132.9 | 0.6 | 3.2 | .. | (14) |
| Price index of materials used in building other than houses (index no.) | Sep qtr 03 | 125.6 | 0.4 | 3.1 | 126.3 | 0.5 | 3.9 | .. | (14) |
| Price index of established houses (index no.) | Sep qtr 03 | 207.2 | 4.1 | 22.8 | 231.3 | 3.4 | 17.6 | .. | (15) |
| Price index of project homes (index no.) | Sep qtr 03 | 160.7 | 1.8 | 4.6 | 151.2 | 2.2 | 7.0 | .. | (15) |
| Labour force and demography | | | | | | | | | |
| Population (resident at end qtr) ('000) | Jun qtr 03 | 1 527.4 | 0.1 | 0.6 | 19 881.5 | 0.3 | 1.2 | 7.7 | (16) |
| Natural increase of the population ('000) | Jun qtr 03 | 1.4 | -17.4 | -0.1 | 31.8 | 13.1 | 12.0 | 4.4 | (16) |
| Labour force | | | | | | | | | |
| Original ('000) | Nov 03 | 757.7 | 0.0 | 2.1 | 10 163.5 | -0.2 | 1.7 | 7.5 | (17) |
| Trend ('000) | Nov 03 | 757.8 | -0.2 | 1.8 | 10 182.8 | 0.2 | 1.3 | 7.4 | (17) |
| Employed persons | | | | | | | | | |
| Original ('000) | Nov 03 | 711.1 | -0.3 | 1.8 | 9 627.4 | -0.1 | 2.2 | 7.4 | (17) |
| Trend ('000) | Nov 03 | 710.7 | -0.3 | 1.7 | 9 610.5 | 0.3 | 1.8 | 7.4 | (17) |
| Participation rate | | | | | | | | | |
| Original(b) (%) | Nov 03 | 61.3 | 0.0 | 0.7 | 63.4 | -0.3 | -0.2 | .. | (17) |
| Trend(b) (%) | Nov 03 | 61.3 | -0.2 | 0.5 | 63.6 | 0.0 | -0.3 | .. | (17) |
| Unemployment rate | | | | | | | | | |
| Original(b) (%) | Nov 03 | 6.2 | 0.3 | 0.3 | 5.3 | -0.1 | -0.5 | .. | (17) |
| Trend(b) (%) | Nov 03 | 6.2 | 0.1 | 0.1 | 5.6 | -0.1 | -0.5 | .. | (17) |
| Job vacancies ('000) | Aug 03 | 6.4 | 10.2 | -17.8 | 108.8 | 9.4 | -0.7 | 5.9 | (18) |
| Industrial disputes ('000 working days lost) | Aug 03 | 0.1 | -97.1 | -92.3 | 25.7 | -40.4 | 52.1 | 0.4 | (19) |
| Income | | | | | | | | | |
| Average weekly earnings (full-time adults; ordinary time) | | | | | | | | | |
| Original (\$) | Aug qtr 03 | 863.9 | 0.5 | 7.3 | 929.6 | 0.9 | 5.7 | .. | (20) |
| Trend (\$) | Aug qtr 03 | 871.9 | 1.5 | 8.0 | 931.4 | 1.5 | 6.1 | .. | (20) |
| Wage cost index (total hourly rate excluding bonuses)(c) (index no.) | Sep qtr 03 | 121.6 | 1.6 | 4.0 | 121.6 | 1.2 | 3.6 | .. | (21) |
| Financial markets | | | | | | | | | |
| Secured housing finance(d) | | | | | | | | | |
| Original (\$m) | Oct 03 | 793.7 | 21.1 | 53.6 | 11 877.7 | 4.0 | 35.3 | 6.7 | (22) |
| Trend (\$m) | Oct 03 | 730.3 | 3.2 | 46.6 | 11 631.3 | 2.3 | 37.7 | 6.3 | (22) |
| Finance commitments | | | | | | | | | |
| Personal (\$m) | Sep 03 | 426.9 | 1.8 | 29.2 | 6 766 | 3.1 | 33.2 | 6.3 | (23) |
| Commercial (\$m) | Sep 03 | 951.2 | 2.6 | -0.7 | 22 709.2 | -3.3 | 9.2 | 4.2 | (23) |
| Lease (\$m) | Sep 03 | 14.9 | 14.3 | 11.4 | 534.1 | -1.6 | 5.6 | 2.8 | (23) |
| Interest rates(b) | | | | | | | | | |
| Banks new housing loans (%) | Sep 03 | .. | .. | .. | 6.6 | 0.0 | 0.0 | .. | (24) |
| Bank loans—small, medium business(e) (%) | Sep 03 | .. | .. | .. | 8.4 | 0.0 | 0.0 | .. | (24) |
| Bank loans—large business (%) | Sep 03 | .. | .. | .. | 8.4 | 0.0 | 0.0 | .. | (24) |

(a) Base year of each index 1989-90 = 100.

(b) Change is shown in terms of percentage points.

(c) Base year of index Sep 1997 = 100.

(d) Excludes alterations and additions. Includes refinancing.

(e) Rate for business loans over \$50,000.

| <i>Indicator</i> | <i>Period</i> | <i>NSW</i> | <i>Vic.</i> | <i>Qld</i> | SA | <i>WA</i> | <i>Tas.</i> | <i>NT</i> | <i>ACT</i> | <i>Source index</i> |
|---|---------------|------------|-------------|------------|---------------|-----------|-------------|-----------|------------|---------------------|
| SELECTED INDICATORS | | | | | | | | | | |
| CPI—All groups(a) (index no.) | Sep qtr 03 | 142.4 | 141.8 | 143.3 | 145.4 | 138.6 | 141.1 | 137.8 | 141.9 | (13) |
| Participation rate trend (%) | Nov 03 | 62.9 | 63.2 | 64.9 | 61.3 | 66.0 | 59.0 | 70.3 | 71.7 | (17) |
| Unemployment rate trend (%) | Nov 03 | 5.4 | 5.2 | 6.0 | 6.2 | 6.1 | 6.7 | 5.1 | 3.8 | (17) |
| Average weekly earnings (full-time adults; ordinary time) trend (\$) | Aug qtr 03 | 974.00 | 933.40 | 861.90 | 871.90 | 931.50 | 836.40 | 910.50 | 1 064.90 | (20) |
| SELECTED INDICATORS PER HEAD OF POPULATION(b) | | | | | | | | | | |
| State final demand | | | | | | | | | | |
| Chain volume measures trend(c) (\$'000) | Sep qtr 03 03 | 9.9 | 9.8 | 9.2 | 9.2 | 10.0 | 8.1 | 13.6 | 16.8 | (1) |
| Retail turnover | | | | | | | | | | |
| Current prices original (\$) | Oct 03 | 824.9 | 767.1 | 845.5 | 765.7 | 783.9 | 706.3 | 831.5 | 970.1 | (3) |
| Current prices, trend | Oct 03 | 799.1 | 742.3 | 815.9 | 728.4 | 767.6 | 697.1 | 792.5 | 978.7 | (3) |
| New motor vehicle sales trend (no. per '000 population) | Oct 03 | 3.9 | 4.2 | 4.3 | 3.6 | 3.8 | 3.7 | 3.1 | 4.0 | (4) |
| Private new capital expenditure | | | | | | | | | | |
| Current prices trend (\$) | Sep qtr | 533.6 | 641.6 | 563.6 | 721.5 | 1 101.3 | 362.6 | 2 546.0 | 538.9 | (5) |
| Dwelling unit approvals | | | | | | | | | | |
| Original (no. per '000 population) | Oct 03 | 0.620 | 1.063 | 1.017 | 0.816 | 1.231 | 0.499 | 0.529 | 1.502 | (7) |
| Trend (no. per '000 population) | Oct 03 | 0.614 | 0.833 | 1.005 | 0.629 | 1.035 | 0.497 | 0.474 | 0.514 | (7) |
| Secured housing finance(d) (\$) | Oct 03 | 697.3 | 522.5 | 606.3 | 519.6 | 590.3 | 316.3 | 336.8 | 558.2 | (22) |
| PERCENTAGE CHANGE FROM PREVIOUS PERIOD | | | | | | | | | | |
| State final demand | | | | | | | | | | |
| Chain volume measures trend (%) | Sep qtr 03 03 | 0.6 | 0.5 | 1.4 | 1.4 | 1.8 | 1.0 | 3.1 | 0.6 | (1) |
| Retail turnover | | | | | | | | | | |
| Current prices original (%) | Oct 03 | 6.9 | 9.3 | 7.4 | 10.6 | 8.2 | 8.8 | 3.6 | 1.9 | (3) |
| Current prices, trend | Oct 03 | 0.8 | 0.6 | 1.5 | 0.1 | 0.5 | 1.1 | 0.8 | -0.2 | (3) |
| New motor vehicle sales trend (%) | Oct 03 | -0.4 | -0.3 | 1.1 | 1.0 | 0.6 | 5.0 | -1.0 | 0.5 | (4) |
| Private new capital expenditure | | | | | | | | | | |
| Current prices trend (%) | Sep qtr 03 03 | 0.6 | 0.5 | 1.4 | 1.4 | 1.8 | 1.0 | 3.1 | 0.6 | (5) |
| Dwelling unit approvals | | | | | | | | | | |
| Original (%) | Oct 03 | -3.8 | 19.2 | -3.9 | 28.2 | 24.4 | 0.4 | -54.9 | 31.8 | (7) |
| Trend (%) | Oct 03 | 1.0 | 0.6 | 1.8 | 2.6 | 3.8 | -1.3 | 9.8 | 0.2 | (7) |
| CPI—All groups (%) | Sep qtr 03 | 0.1 | 0.6 | 1.1 | 0.8 | 0.9 | 0.2 | -0.1 | 0.9 | (13) |
| Participation rate trend(e) (%) | Nov 03 | 0.1 | 0.0 | 0.0 | -0.2 | 0.1 | 0.1 | 0.2 | 0.2 | (17) |
| Unemployment rate trend(e) (%) | Nov 03 | -0.1 | -0.1 | -0.2 | 0.1 | 0.0 | -0.1 | -0.2 | -0.2 | (17) |
| Average weekly earnings (full-time adults; ordinary time) trend (%) | Aug qtr 03 | 1.0 | 1.5 | 2.3 | 1.5 | 2.0 | 0.7 | 1.6 | 1.3 | (20) |
| Secured housing finance (%) | Oct 03 | 1.5 | 4.8 | 2.6 | 21.1 | 5.8 | 5.0 | -0.1 | -0.3 | (22) |
| (a) Base year of index 1989–90 = 100. | | | | | | | | | | |
| (b) The latest quarterly estimate of Australian resident population has been used to calculate ratios for subsequent periods. | | | | | | | | | | |
| (c) Reference year for chain volume measures is 2001–02. | | | | | | | | | | |
| (d) Excludes alterations and additions. Includes refinancing. | | | | | | | | | | |
| (e) Change is shown in terms of percentage points. | | | | | | | | | | |

3

STATE ACCOUNTS AT CURRENT PRICES

| Period | Final consumption expenditure | | Gross fixed capital formation | | State final demand | Gross State product | Compensation of employees |
|------------------------|-------------------------------|--------------------|-------------------------------|--------|--------------------|---------------------|---------------------------|
| | Households | General government | Private | Public | | | |
| ANNUAL (\$m) | | | | | | | |
| 2000-01 | 28 873 | 8 871 | 8 518 | 97 | 46 358 | 44 211 | 20 811 |
| 2001-02 | 30 945 | 9 472 | 8 412 | 1 259 | 50 088 | 47 307 | 21 847 |
| 2002-03 | 33 504 | 9 769 | 10 540 | 1 373 | 55 186 | 48 897 | 23 148 |
| QUARTERLY, TREND (\$m) | | | | | | | |
| 2001-02 | | | | | | | |
| June | 7 991 | 2 438 | 2 303 | 342 | 13 074 | n.a. | 5 555 |
| 2002-03 | | | | | | | |
| September | 8 150 | 2 458 | 2 401 | 345 | 13 352 | n.a. | 5 623 |
| December | 8 305 | 2 464 | 2 509 | 335 | 13 613 | n.a. | 5 733 |
| March | 8 433 | 2 469 | 2 643 | 340 | 13 881 | n.a. | 5 831 |
| June | 8 530 | 2 478 | 2 792 | 361 | 14 159 | n.a. | 5 902 |
| 2003-04 | | | | | | | |
| September | 8 602 | 2 490 | 2 908 | 380 | 14 422 | n.a. | 5 955 |

Source: Australian National Accounts: National Income, Expenditure and Product (cat. no. 5206.0), and Australian National Accounts: State Accounts (cat. no. 5220.0).

4

STATE ACCOUNTS AT CHAIN VOLUME MEASURES(a)

| Period | Final consumption expenditure | | Gross fixed capital formation | | State final demand | Gross State product |
|------------------------|-------------------------------|--------------------|-------------------------------|--------|--------------------|---------------------|
| | Households | General government | Private | Public | | |
| ANNUAL (\$m) | | | | | | |
| 2000-01 | 29 452 | 9 286 | 8 669 | 76 | 47 484 | 45 741 |
| 2001-02 | 30 945 | 9 472 | 8 411 | 1 259 | 50 088 | 47 307 |
| 2002-03 | 32 555 | 9 672 | 10 434 | 1 373 | 54 034 | 47 347 |
| QUARTERLY, TREND (\$m) | | | | | | |
| 2001-02 | | | | | | |
| June | 7 926 | 2 411 | 2 297 | 340 | 12 980 | n.a. |
| 2002-03 | | | | | | |
| September | 8 014 | 2 438 | 2 385 | 343 | 13 183 | n.a. |
| December | 8 091 | 2 446 | 2 488 | 334 | 13 360 | n.a. |
| March | 8 164 | 2 443 | 2 623 | 341 | 13 569 | n.a. |
| June | 8 226 | 2 440 | 2 774 | 362 | 13 802 | n.a. |
| 2003-04 | | | | | | |
| September | 8 271 | 2 439 | 2 891 | 379 | 13 990 | n.a. |

(a) Reference year for chain volume measures is 2001-02.

Source: Australian National Accounts: National Income, Expenditure and Product (cat. no. 5206.0), and Australian National Accounts: State Accounts (cat. no. 5220.0).

5

MERCHANDISE EXPORTS, BY SELECTED COMMODITY GROUP(a)

| <i>Period</i> | <i>Meat and meat preparations</i> | <i>Wheat</i> | <i>Wine</i> | <i>Wool and sheepskins (excl. wool tops)</i> | <i>Machinery</i> | <i>Metals and metal manufactures</i> | <i>Fish and crustaceans</i> | <i>Road vehicles, parts and accessories</i> | <i>Petroleum and petroleum products</i> | <i>Total(b)</i> |
|----------------|-----------------------------------|--------------|-------------|--|------------------|--------------------------------------|-----------------------------|---|---|-----------------|
| | \$'000 | \$'000 | \$'000 | \$'000 | \$'000 | \$'000 | \$'000 | \$'000 | \$'000 | \$'000 |
| 2000-01 | 262 565 | 767 524 | 1 081 599 | 236 034 | 381 785 | 1 019 926 | 451 841 | 1 399 489 | 355 781 | 8 286 782 |
| 2001-02 | 316 263 | 1 154 933 | 1 358 316 | 256 722 | 321 445 | 913 417 | 474 854 | 1 613 919 | 250 728 | 9 103 263 |
| 2002-03 | 316 812 | 776 318 | 1 455 338 | 256 644 | 323 985 | 866 848 | 448 723 | 1 412 933 | 290 526 | 8 365 082 |
| 2001-02 | | | | | | | | | | |
| April | 24 011 | 102 777 | 122 653 | 22 942 | 32 351 | 74 900 | 25 363 | 134 415 | 8 900 | 756 976 |
| May | 26 189 | 114 535 | 146 020 | 34 208 | 33 412 | 85 067 | 22 517 | 84 964 | 32 896 | 790 765 |
| June | 24 324 | 91 704 | 148 574 | 18 967 | 27 472 | 58 902 | 36 472 | 183 302 | 16 920 | 795 950 |
| 2002-03 | | | | | | | | | | |
| July | 17 509 | 25 309 | 115 141 | 20 534 | 27 470 | 67 414 | 90 175 | 110 752 | 27 041 | 704 054 |
| August | 16 462 | 87 890 | 121 771 | 14 491 | 24 896 | 65 047 | 138 036 | 134 638 | 25 870 | 831 220 |
| September | 27 759 | 60 374 | 168 513 | 20 766 | 31 641 | 71 967 | 38 038 | 82 804 | 23 846 | 763 577 |
| October | 29 930 | 50 488 | 141 821 | 29 122 | 24 139 | 81 376 | 19 854 | 115 691 | 25 432 | 685 880 |
| November | 35 128 | 65 111 | 96 826 | 30 990 | 26 285 | 74 824 | 24 647 | 276 999 | 19 613 | 818 604 |
| December | 33 023 | 54 121 | 129 290 | 30 611 | 28 324 | 90 891 | 26 171 | 207 525 | 30 625 | 834 092 |
| January | 24 488 | 58 429 | 81 523 | 18 057 | 17 330 | 69 594 | 29 408 | 31 453 | 46 499 | 565 490 |
| February | 31 302 | 122 226 | 99 032 | 17 601 | 27 314 | 73 028 | 15 364 | 127 157 | 31 903 | 701 134 |
| March | 33 998 | 94 369 | 123 624 | 23 284 | 35 767 | 76 507 | 18 597 | 101 538 | 19 494 | 705 707 |
| April | 23 853 | 19 832 | 126 128 | 21 834 | 29 155 | 62 833 | 16 543 | 59 943 | 6 233 | 519 735 |
| May | 22 480 | 99 477 | 124 883 | 14 070 | 26 535 | 62 361 | 15 675 | 92 623 | 17 926 | 653 601 |
| June | 20 882 | 38 691 | 126 786 | 15 284 | 25 127 | 71 004 | 16 216 | 71 810 | 16 042 | 581 987 |
| 2003-04 | | | | | | | | | | |
| July | 10 921 | 49 275 | 108 676 | 13 802 | 25 548 | 65 107 | 40 728 | 91 148 | 28 694 | 591 674 |
| August | 18 400 | 37 613 | 143 963 | 10 181 | 30 755 | 50 409 | 120 182 | 89 904 | 195 | 641 470 |
| September | 22 525 | 311 | 128 471 | 16 167 | 27 275 | 57 776 | 70 685 | 138 958 | 30 855 | 670 013 |
| October | 29 717 | 43 258 | 128 766 | 18 132 | 26 489 | 64 348 | 39 271 | 120 579 | 17 037 | 651 592 |

(a) Restrictions are placed on the release of statistics for certain commodities for reasons of confidentiality. These restrictions do not affect total export and import figures, but they can affect some items within commodity, industry and country tables. See *International Trade* (cat. no. 5422.0), Explanatory Notes, paragraph 30, for more details.

(b) Includes other commodity groups not listed.

Source: ABS data available on request.

6

MERCHANDISE EXPORTS, BY SELECTED COUNTRIES AND COUNTRY GROUPS(a)

| Period | European Union | | | | | South-East and North-East Asia | | | | |
|----------------|--------------------------|-------------|----------------|----------------------|-------------|--------------------------------|---------|-----------|----------|-----------|
| | United States of America | Middle East | United Kingdom | Total European Union | New Zealand | Japan | China | Hong Kong | ASEAN(b) | Total |
| | \$'000 | \$'000 | \$'000 | \$'000 | \$'000 | \$'000 | \$'000 | \$'000 | \$'000 | \$'000 |
| 2000-01 | 1 354 759 | 1 335 811 | 713 525 | 1 232 563 | 480 887 | 963 481 | 437 939 | 298 939 | 683 694 | 2 882 839 |
| 2001-02 | 1 597 719 | 1 825 194 | 784 284 | 1 337 855 | 568 712 | 937 578 | 406 163 | 240 066 | 597 414 | 2 594 269 |
| 2002-03 | 1 403 006 | 1 331 491 | 798 626 | 1 354 632 | 627 220 | 931 891 | 421 984 | 223 416 | 683 557 | 2 675 932 |
| 2001-02 | | | | | | | | | | |
| April | 131 376 | 191 395 | 64 676 | 96 837 | 61 889 | 74 655 | 33 973 | 12 231 | 41 571 | 196 230 |
| May | 129 531 | 133 050 | 79 270 | 116 645 | 36 358 | 53 042 | 37 268 | 19 133 | 51 573 | 205 755 |
| June | 179 897 | 149 770 | 78 219 | 124 464 | 44 543 | 84 535 | 27 599 | 14 205 | 53 962 | 208 237 |
| 2002-03 | | | | | | | | | | |
| July | 74 918 | 102 167 | 69 831 | 116 422 | 55 005 | 129 520 | 24 783 | 7 936 | 52 596 | 270 954 |
| August | 149 657 | 99 934 | 69 969 | 115 131 | 64 639 | 189 807 | 29 888 | 15 393 | 47 653 | 311 563 |
| September | 95 913 | 126 778 | 107 251 | 170 585 | 46 478 | 91 725 | 35 019 | 7 956 | 53 856 | 236 810 |
| October | 124 514 | 107 491 | 77 700 | 115 453 | 51 528 | 64 473 | 34 478 | 13 004 | 63 230 | 217 091 |
| November | 240 775 | 175 617 | 37 899 | 74 682 | 55 019 | 35 195 | 53 288 | 30 257 | 52 332 | 210 876 |
| December | 165 146 | 103 930 | 71 837 | 122 023 | 81 860 | 54 844 | 39 916 | 22 573 | 87 657 | 262 046 |
| January | 61 787 | 83 362 | 46 480 | 83 484 | 23 593 | 86 515 | 39 487 | 50 976 | 46 086 | 253 578 |
| February | 103 794 | 165 742 | 60 527 | 106 139 | 51 631 | 50 361 | 47 342 | 17 404 | 62 113 | 197 420 |
| March | 118 222 | 106 465 | 63 732 | 130 340 | 50 848 | 60 422 | 25 578 | 25 291 | 64 105 | 197 460 |
| April | 85 419 | 40 123 | 67 729 | 116 576 | 47 749 | 36 987 | 46 359 | 9 696 | 52 303 | 171 179 |
| May | 87 473 | 146 536 | 65 793 | 106 188 | 43 049 | 51 968 | 20 310 | 15 526 | 51 880 | 163 034 |
| June | 95 389 | 73 346 | 59 878 | 97 610 | 55 820 | 80 075 | 25 536 | 7 405 | 49 747 | 183 921 |
| 2003-04 | | | | | | | | | | |
| July | 97 048 | 78 379 | 57 872 | 101 997 | 46 130 | 80 086 | 31 764 | 14 541 | 54 508 | 205 179 |
| August | 81 650 | 59 554 | 98 821 | 135 285 | 53 539 | 136 157 | 13 297 | 10 342 | 51 963 | 228 848 |
| September | 76 177 | 119 334 | 74 780 | 109 774 | 68 441 | 107 130 | 36 987 | 16 756 | 44 403 | 232 877 |
| October | 122 087 | 81 055 | 60 141 | 98 544 | 60 757 | 64 364 | 34 385 | 20 717 | 53 904 | 200 692 |

(a) See *International Merchandise Trade, Australia* (cat. no. 5422.0) for country group definitions.

(b) Figures from September 2001 have been updated to include Cambodia in the ASEAN country grouping.

Source: ABS data available on request.

7

MERCHANDISE IMPORTS, BY SELECTED COMMODITY GROUP(a)

| <i>Period</i> | <i>Food, beverages and tobacco</i> | <i>Petroleum and petroleum products</i> | <i>Chemicals</i> | <i>Textiles</i> | <i>Metals and metal manufactures</i> | <i>Machinery</i> | <i>Road vehicle parts and accessories</i> | <i>Other manufactured goods</i> | <i>Total(b)</i> |
|----------------|------------------------------------|---|------------------|-----------------|--------------------------------------|------------------|---|---------------------------------|-----------------|
| | <i>\$'000</i> | <i>\$'000</i> | <i>\$'000</i> | <i>\$'000</i> | <i>\$'000</i> | <i>\$'000</i> | <i>\$'000</i> | <i>\$'000</i> | <i>\$'000</i> |
| 2000-01 | 183 196 | 968 428 | 284 227 | 97 281 | 315 327 | 1 205 016 | 854 759 | 926 817 | 5 044 553 |
| 2001-02 | 205 295 | 869 161 | 266 527 | 106 543 | 332 538 | 1 399 576 | 887 698 | 1 058 212 | 5 346 782 |
| 2002-03 | 248 567 | 859 621 | 292 133 | 101 033 | 394 042 | 1 458 445 | 997 944 | 1 103 484 | 5 724 322 |
| 2001-02 | | | | | | | | | |
| April | 11 993 | 78 266 | 24 836 | 9 947 | 27 980 | 113 247 | 81 305 | 79 415 | 450 747 |
| May | 14 585 | 62 102 | 27 331 | 9 842 | 27 092 | 117 219 | 80 639 | 86 692 | 445 885 |
| June | 15 103 | 64 704 | 14 566 | 8 448 | 26 002 | 96 307 | 73 499 | 77 657 | 393 051 |
| 2002-03 | | | | | | | | | |
| July | 17 666 | 66 712 | 18 971 | 7 211 | 33 106 | 111 832 | 88 041 | 91 501 | 454 751 |
| August | 20 355 | 63 951 | 19 172 | 11 171 | 35 439 | 121 990 | 83 005 | 97 867 | 476 144 |
| September | 19 907 | 79 309 | 20 554 | 8 920 | 32 522 | 123 896 | 77 186 | 92 519 | 474 629 |
| October | 27 427 | 75 644 | 20 997 | 11 574 | 36 988 | 138 644 | 102 861 | 111 149 | 549 856 |
| November | 25 409 | 99 478 | 18 138 | 8 474 | 32 137 | 129 215 | 85 053 | 98 790 | 523 005 |
| December | 23 239 | 138 539 | 18 900 | 7 312 | 29 398 | 161 327 | 57 850 | 91 780 | 549 430 |
| January | 20 923 | 10 582 | 27 344 | 7 314 | 37 903 | 134 051 | 81 618 | 100 239 | 443 540 |
| February | 17 995 | 143 475 | 37 879 | 6 736 | 29 245 | 91 475 | 76 676 | 92 669 | 522 180 |
| March | 19 157 | 21 | 38 512 | 8 263 | 31 177 | 95 171 | 82 654 | 86 550 | 384 990 |
| April | 19 541 | 69 369 | 27 577 | 8 053 | 29 854 | 114 412 | 82 397 | 77 488 | 450 980 |
| May | 18 051 | 84 235 | 26 308 | 8 739 | 35 544 | 132 816 | 92 346 | 79 073 | 496 266 |
| June | 18 898 | 28 307 | 17 783 | 7 265 | 30 730 | 103 614 | 88 258 | 83 859 | 398 552 |
| 2003-04 | | | | | | | | | |
| July | 19 975 | 23 106 | 18 137 | 7 796 | 33 387 | 130 916 | 89 600 | 100 386 | 445 673 |
| August | 19 055 | 35 817 | 16 581 | 6 917 | 34 320 | 115 364 | 81 149 | 99 152 | 429 137 |
| September | 20 976 | 27 861 | 15 081 | 7 122 | 40 223 | 116 249 | 87 786 | 98 559 | 433 518 |
| October | 22 914 | 18 390 | 18 520 | 7 844 | 38 685 | 129 316 | 92 182 | 95 946 | 443 808 |

(a) Restrictions are placed on the release of statistics for certain commodities for reasons of confidentiality. These restrictions do not affect total export and import figures, but they can affect some items within commodity, industry and country tables. See *International Trade* (cat. no. 5422.0), Explanatory Notes, paragraph 30, for more details.

(b) Includes other commodity groups not listed.

Source: ABS data available on request.

8

TURNOVER OF RETAIL ESTABLISHMENTS, BY INDUSTRY—TREND

| Period | Food retailing | Department stores | Clothing and soft good retailing | Household good retailing | Recreational good retailing | Other retailing | Hospitality and services | Total |
|----------------|-------------------|----------------------|---|--------------------------------|-----------------------------------|--------------------|--------------------------------|---------|
| | \$m | \$m | \$m | \$m | \$m | \$m | \$m | \$m |
| 2002-03 | | | | | | | | |
| August | 449.1 | 101.2 | 55.7 | 134.9 | 30.6 | 121.0 | 181.8 | 1 073.5 |
| September | 451.4 | 102.2 | 57.0 | 134.4 | 31.6 | 120.3 | 182.2 | 1 078.2 |
| October | 452.7 | 103.1 | 58.3 | 134.5 | 32.4 | 119.0 | 181.8 | 1 081.1 |
| November | 453.3 | 103.8 | 59.7 | 135.0 | 33.0 | 117.3 | 181.3 | 1 083.1 |
| December | 454.0 | 104.2 | 60.9 | 135.4 | 33.5 | 115.9 | 181.2 | 1 085.3 |
| January | 455.5 | 104.6 | 61.9 | 135.2 | 34.2 | 115.8 | 182.2 | 1 089.6 |
| February | 458.0 | 105.3 | 62.5 | 134.6 | 35.2 | 117.1 | 183.7 | 1 096.5 |
| March | 460.6 | 106.2 | 62.9 | 134.2 | 36.1 | 119.1 | 185.1 | 1 104.1 |
| April | 462.3 | 106.9 | 62.7 | 134.2 | 36.5 | 120.8 | 185.7 | 1 109.3 |
| May | 462.8 | 107.5 | 62.3 | 134.8 | 36.6 | 121.5 | 185.8 | 1 111.3 |
| June | 462.3 | 107.8 | 61.8 | 135.6 | 36.3 | 121.2 | 186.1 | 1 110.9 |
| 2003-04 | | | | | | | | |
| July | 461.4 | 107.9 | 61.5 | 136.3 | 35.9 | 120.2 | 186.7 | 1 109.8 |
| August | 460.8 | 108.1 | 61.4 | 136.9 | 35.5 | 119.2 | 187.8 | 1 109.7 |
| September | 460.9 | 108.4 | 61.7 | 137.4 | 35.4 | 118.3 | 189.0 | 1 111.2 |
| October | 460.9 | 108.8 | 62.0 | 137.9 | 35.3 | 117.4 | 190.4 | 1 112.6 |

Source: Retail Trade, Australia (cat. no. 8501.0).

9

NEW MOTOR VEHICLE SALES, BY TYPE OF VEHICLE

| Period | Original | | | Seasonally adjusted | | | Trend estimate | | |
|----------------|-----------------------|-------------------|-------|-----------------------|-------------------|-------|-----------------------|-------------------|-------|
| | Passenger vehicles | Other vehicles | Total | Passenger vehicles | Other vehicles | Total | Passenger vehicles | Other vehicles | Total |
| 2002-03 | | | | | | | | | |
| August | 3 108 | 1 429 | 4 537 | 3 010 | 1 417 | 4 427 | 2 985 | 1 433 | 4 418 |
| September | 2 936 | 1 251 | 4 187 | 3 121 | 1 460 | 4 581 | 2 984 | 1 433 | 4 417 |
| October | 3 109 | 1 390 | 4 499 | 2 989 | 1 445 | 4 434 | 3 000 | 1 444 | 4 444 |
| November | 3 134 | 1 507 | 4 641 | 2 925 | 1 501 | 4 426 | 3 050 | 1 474 | 4 524 |
| December | 3 062 | 1 469 | 4 531 | 2 862 | 1 276 | 4 138 | 3 136 | 1 513 | 4 649 |
| January | 2 653 | 1 335 | 3 988 | 3 467 | 1 769 | 5 236 | 3 245 | 1 548 | 4 793 |
| February | 3 290 | 1 464 | 4 754 | 3 476 | 1 634 | 5 110 | 3 346 | 1 577 | 4 923 |
| March | 3 562 | 1 585 | 5 147 | 3 440 | 1 512 | 4 952 | 3 415 | 1 601 | 5 016 |
| April | 3 018 | 1 489 | 4 507 | 3 384 | 1 660 | 5 044 | 3 449 | 1 622 | 5 071 |
| May | 3 581 | 1 692 | 5 273 | 3 506 | 1 552 | 5 058 | 3 457 | 1 645 | 5 102 |
| June | 3 869 | 2 220 | 6 089 | 3 365 | 1 697 | 5 062 | 3 467 | 1 676 | 5 143 |
| 2003-04 | | | | | | | | | |
| July | 3 547 | 1 751 | 5 298 | 3 420 | 1 758 | 5 178 | 3 502 | 1 719 | 5 221 |
| August | 3 539 | 1 724 | 5 263 | 3 629 | 1 744 | 5 373 | 3 547 | 1 760 | 5 307 |
| September | 3 601 | 1 621 | 5 222 | 3 696 | 1 834 | 5 530 | 3 590 | 1 793 | 5 383 |
| October | 3 707 | 1 723 | 5 430 | 3 563 | 1 784 | 5 347 | 3 626 | 1 813 | 5 439 |

Source: Sales of New Motor Vehicles, Australia (cat. no. 9314.0.55.001).

10

ACTUAL PRIVATE NEW CAPITAL EXPENDITURE, BY SELECTED INDUSTRY AND TYPE OF ASSET

| Period | Industry | | | Total | Type of asset | |
|---------------------------|----------|---------------|---------------------------|-------|------------------------------|--------------------------------|
| | Mining | Manufacturing | Other selected industries | | New buildings and structures | Equipment, plant and machinery |
| ANNUAL (\$m) | | | | | | |
| 2000-01 | 434 | 891 | 1 537 | 2 862 | 692 | 2 171 |
| 2001-02 | 355 | 927 | 1 831 | 3 113 | 617 | 2 496 |
| 2002-03 | 648 | 1 182 | 2 188 | 4 020 | 784 | 3 236 |
| QUARTERLY, ORIGINAL (\$m) | | | | | | |
| 2001-02 | | | | | | |
| June | 101 | 256 | 539 | 897 | 159 | 738 |
| 2002-03 | | | | | | |
| September | 117 | 237 | 466 | 821 | 159 | 662 |
| December | 173 | 306 | 679 | 1 159 | 216 | 943 |
| March | 148 | 287 | 462 | 897 | 163 | 734 |
| June | 210 | 352 | 581 | 1 143 | 246 | 897 |
| 2003-04 | | | | | | |
| September | 193 | 294 | 468 | 956 | 188 | 768 |
| QUARTERLY, TREND (\$m) | | | | | | |
| 2001-02 | | | | | | |
| June | n.a. | n.a. | n.a. | 861 | 162 | 699 |
| 2002-03 | | | | | | |
| September | n.a. | n.a. | n.a. | 890 | 166 | 724 |
| December | n.a. | n.a. | n.a. | 938 | 183 | 755 |
| March | n.a. | n.a. | n.a. | 1 001 | 204 | 797 |
| June | n.a. | n.a. | n.a. | 1 063 | 218 | 845 |
| 2003-04 | | | | | | |
| September | n.a. | n.a. | n.a. | 1 102 | 221 | 881 |

Source: Private New Capital Expenditure, Australia (cat. no. 5625.0) and ABS data available on request.

11

TOURIST ACCOMMODATION

| Period | Licensed hotels with facilities | | | | Motels and guesthouses | | | | Serviced apartments | | | |
|----------------|---------------------------------|-------------|-----------------|---------|------------------------|-------------|-----------------|---------|---------------------|-------------|-----------------|---------|
| | Estab-lish-ments | Guest rooms | Room occu-pancy | Takings | Estab-lish-ments | Guest rooms | Room occu-pancy | Takings | Estab-lish-ments | Guest rooms | Room occu-pancy | Takings |
| | no. | no. | % | \$'000 | no. | no. | % | \$'000 | no. | no. | % | \$'000 |
| 2000-01 | | | | | | | | | | | | |
| March | 62 | 3 905 | 59.9 | 25 686 | 146 | 5 217 | 55.2 | 21 889 | 27 | 1 280 | 67.1 | 7 955 |
| June | 61 | 4 066 | 55.9 | 23 849 | 146 | 5 230 | 50.5 | 20 289 | 27 | 1 300 | 63.2 | 7 959 |
| 2001-02 | | | | | | | | | | | | |
| September | 61 | 4 078 | 56.3 | 23 498 | 146 | 5 231 | 49.7 | 19 926 | 27 | 1 293 | 60.1 | 7 019 |
| December | 61 | 4 083 | 61.0 | 26 556 | 144 | 5 170 | 51.9 | 21 044 | 27 | 1 283 | 67.0 | 8 218 |
| March | 62 | 4 091 | 61.6 | 27 321 | 145 | 5 196 | 55.6 | 22 468 | 27 | 1 293 | 70.5 | 8 454 |
| June | 62 | 4 364 | 55.4 | 24 362 | 145 | 5 234 | 50.4 | 20 482 | 29 | 1 357 | 65.6 | 8 078 |
| 2002-03 | | | | | | | | | | | | |
| September | 63 | 4 381 | 57.9 | 26 109 | 144 | 5 220 | 49.4 | 20 150 | 30 | 1 430 | 65.8 | 8 595 |
| December | 62 | 4 362 | 64.8 | 31 051 | 145 | 5 232 | 55.6 | 23 424 | 31 | 1 435 | 70.3 | 10 424 |
| March | 64 | 4 653 | 56.4 | 26 778 | 147 | 5 316 | 52.9 | 22 478 | 32 | 4 604 | 60.3 | 9 879 |

Source: Tourist Accommodation, Australia (cat. no. 8635.0).

| Period | Houses | | Total dwelling units | | New residential building \$m | Alterations and additions to residential building \$m | Total residential building \$m | Non-residential building \$m | Total building \$m |
|-------------------|----------------|-------|----------------------|--------|---------------------------------|--|-----------------------------------|---------------------------------|-----------------------|
| | Private sector | Total | Private sector | Total | | | | | |
| | no. | no. | no. | no. | | | | | |
| ANNUAL | | | | | | | | | |
| 2000-01 | 5 555 | 5 644 | 6 659 | 6 775 | 735.6 | 157.3 | 892.9 | 718.2 | 1 611.1 |
| 2001-02 | 8 858 | 9 177 | 10 544 | 10 903 | 1 202.3 | 191.6 | 1 393.9 | 804.8 | 2 198.7 |
| 2002-03 | 8 243 | 8 604 | 10 393 | 10 824 | 1 383.1 | 270.2 | 1 653.3 | 1 001.5 | 2 654.8 |
| MONTHLY, ORIGINAL | | | | | | | | | |
| 2002-03 | | | | | | | | | |
| July | 796 | 844 | 878 | 936 | 113.9 | 20.2 | 134.1 | 53.3 | 187.4 |
| August | 807 | 838 | 1 037 | 1 072 | 110.2 | 22.0 | 132.2 | 121.1 | 253.2 |
| September | 762 | 795 | 825 | 860 | 99.7 | 20.3 | 120.0 | 75.1 | 195.1 |
| October | 729 | 767 | 1 083 | 1 125 | 198.0 | 20.6 | 218.6 | 56.1 | 274.7 |
| November | 720 | 760 | 881 | 933 | 117.1 | 20.1 | 137.2 | 162.8 | 300.0 |
| December | 570 | 614 | 822 | 882 | 111.7 | 19.5 | 131.2 | 64.6 | 195.8 |
| January | 493 | 514 | 756 | 783 | 103.6 | 16.7 | 120.2 | 42.4 | 162.7 |
| February | 633 | 651 | 715 | 745 | 96.4 | 20.3 | 116.6 | 65.2 | 181.8 |
| March | 667 | 678 | 1 040 | 1 051 | 120.8 | 49.8 | 170.6 | 48.4 | 218.9 |
| April | 591 | 614 | 683 | 706 | 88.8 | 20.3 | 109.1 | 95.6 | 204.7 |
| May | 705 | 721 | 806 | 824 | 108.0 | 20.5 | 128.5 | 105.4 | 233.8 |
| June | 770 | 808 | 867 | 907 | 115.1 | 20.0 | 135.0 | 111.5 | 246.5 |
| 2003-04 | | | | | | | | | |
| July | 870 | 893 | 979 | 1 004 | 138.2 | 23.3 | 161.5 | 86.5 | 248.0 |
| August | 676 | 705 | 824 | 872 | 113.2 | 19.4 | 132.6 | 92.4 | 225.0 |
| September | 795 | 823 | 941 | 973 | 128.2 | 24.3 | 152.5 | 38.4 | 190.8 |
| October | 787 | 820 | 1 206 | 1 247 | 152.9 | 25.4 | 178.3 | 311.3 | 489.6 |
| MONTHLY, TREND | | | | | | | | | |
| 2002-03 | | | | | | | | | |
| July | 751 | 783 | 922 | 958 | 101.6 | 19.0 | 120.5 | 69.4 | 189.9 |
| August | 748 | 784 | 920 | 961 | 102.4 | 19.6 | 122.0 | 79.4 | 201.4 |
| September | 733 | 772 | 917 | 962 | 105.4 | 19.9 | 125.3 | 87.5 | 212.8 |
| October | 709 | 748 | 908 | 955 | 109.8 | 20.0 | 129.7 | 91.5 | 221.2 |
| November | 678 | 714 | 895 | 940 | 114.0 | 20.0 | 134.0 | 90.1 | 224.2 |
| December | 646 | 678 | 870 | 912 | 115.8 | 20.2 | 136.0 | 84.5 | 220.5 |
| January | 624 | 651 | 845 | 881 | 114.5 | 20.7 | 135.2 | 78.7 | 213.8 |
| February | 620 | 642 | 827 | 856 | 111.6 | 21.2 | 132.8 | 76.5 | 209.3 |
| March | 635 | 654 | 819 | 842 | 108.4 | 21.5 | 130.0 | 80.0 | 210.0 |
| April | 660 | 679 | 818 | 839 | 106.1 | 21.6 | 127.3 | 82.4 | 214.3 |
| May | 690 | 712 | 830 | 854 | 106.3 | 21.4 | 127.1 | 85.6 | 220.8 |
| June | 716 | 741 | 850 | 879 | 109.4 | 21.2 | 130.4 | 91.0 | 225.4 |
| 2003-04 | | | | | | | | | |
| July | 736 | 763 | 876 | 909 | 114.7 | 21.2 | 136.8 | 98.7 | 224.8 |
| August | 750 | 779 | 900 | 936 | 120.4 | 21.4 | 144.5 | 112.2 | 221.4 |
| September | 762 | 792 | 921 | 960 | 125.8 | 21.7 | 152.7 | 131.2 | 217.3 |
| October | 770 | 801 | 943 | 984 | 131.2 | 22.2 | 161.2 | 152.5 | 213.3 |

Source: Building Approvals, Australia (cat. no. 8731.0) and ABS data available on request.

13

BUILDING COMMENCEMENTS

| Period | New houses | | Total dwelling units(a) | | New residential building \$m | Alterations and additions to residential building \$m | Non-residential building | | |
|----------------|----------------|-------|-------------------------|--------|---------------------------------|--|--------------------------|-------|----------------|
| | Private sector | Total | Private sector | Total | | | Private sector | Total | Total building |
| | no. | no. | no. | no. | | | \$m | \$m | \$m |
| 2000-01 | 5 303 | 5 390 | 6 442 | 6 556 | 779.2 | 161.4 | 390.4 | 729.6 | 1 670.1 |
| 2001-02 | 8 030 | 8 281 | 9 702 | 9 991 | 1 236.2 | 197.3 | 575.0 | 761.9 | 2 195.5 |
| 2002-03 | 7 893 | 8 234 | 9 890 | 10 308 | 1 441.0 | 253.2 | 644.6 | 932.8 | 2 627.1 |
| 2000-01 | | | | | | | | | |
| June | 1 422 | 1 443 | 1 605 | 1 628 | 196.0 | 47.9 | 91.9 | 300.7 | 544.6 |
| 2001-02 | | | | | | | | | |
| September | 1 835 | 1 857 | 2 365 | 2 400 | 324.0 | 45.1 | 145.3 | 188.7 | 557.9 |
| December | 2 217 | 2 273 | 2 543 | 2 613 | 307.8 | 52.7 | 167.2 | 199.4 | 559.9 |
| March | 1 853 | 1 949 | 2 232 | 2 335 | 280.0 | 50.5 | 122.6 | 173.7 | 504.1 |
| June | 2 125 | 2 202 | 2 563 | 2 644 | 324.4 | 49.0 | 139.9 | 200.1 | 573.6 |
| 2002-03 | | | | | | | | | |
| September | 2 302 | 2 403 | 2 619 | 2 732 | 355.6 | 55.9 | 177.7 | 249.0 | 660.5 |
| December | 1 897 | 2 004 | 2 636 | 2 759 | 402.7 | 75.0 | 144.8 | 268.1 | 745.8 |
| March | 1 821 | 1 903 | 2 254 | 2 366 | 320.9 | 57.6 | 154.9 | 188.0 | 566.6 |
| June | 1 872 | 1 924 | 2 381 | 2 450 | 361.8 | 64.7 | 167.2 | 227.7 | 654.2 |

(a) Includes conversions.

Source: Building Activity, Australia (cat. no. 8752.0).

VALUE OF BUILDING WORK DONE AND COMPLETED DURING PERIOD

| Period | New houses | | New residential building | | | Non-residential building | | Total building | | |
|----------------------------------|----------------|---------|--------------------------|---------|---|----------------------------|----------------|----------------|----------------|---------|
| | Private sector | Total | Private sector | Total | Alterations and additions to residential building | Total residential building | Private sector | Total | Private sector | Total |
| | \$m | \$m | \$m | \$m | \$m | \$m | \$m | \$m | \$m | \$m |
| VALUE OF BUILDING WORK DONE | | | | | | | | | | |
| 2000-01 | 679.7 | 686.9 | 835.5 | 845.0 | 161.9 | 1 006.9 | 395.0 | 624.0 | 1 385.4 | 1 630.9 |
| 2001-02 | 852.9 | 871.7 | 1 043.3 | 1 065.3 | 193.9 | 1 259.2 | 522.1 | 778.2 | 1 754.6 | 2 037.4 |
| 2002-03 | 1 051.5 | 1 088.9 | 1 275.6 | 1 318.8 | 247.4 | 1 566.2 | 626.1 | 890.9 | 2 146.5 | 2 457.1 |
| 2000-01 | | | | | | | | | | |
| June | 161.6 | 163.8 | 197.3 | 200.3 | 48.2 | 248.6 | 97.2 | 163.9 | 340.6 | 412.5 |
| 2001-02 | | | | | | | | | | |
| September | 184.2 | 187.2 | 227.7 | 231.2 | 48.7 | 279.9 | 112.7 | 170.6 | 386.9 | 450.6 |
| December | 219.4 | 222.6 | 261.9 | 265.5 | 48.4 | 314.0 | 146.9 | 213.8 | 456.3 | 527.7 |
| March | 215.1 | 220.0 | 262.5 | 268.6 | 46.9 | 315.5 | 131.3 | 185.0 | 439.7 | 500.4 |
| June | 234.2 | 242.0 | 291.2 | 300.0 | 49.8 | 349.8 | 131.3 | 208.9 | 471.7 | 558.7 |
| 2002-03 | | | | | | | | | | |
| September | 259.7 | 269.0 | 318.5 | 328.6 | 56.4 | 385.0 | 163.1 | 224.6 | 537.4 | 609.6 |
| December | 255.9 | 265.3 | 319.6 | 330.0 | 67.7 | 397.7 | 151.8 | 212.0 | 538.6 | 609.7 |
| March | 260.4 | 269.4 | 303.5 | 314.0 | 59.1 | 373.0 | 143.2 | 205.0 | 505.3 | 578.0 |
| June | 275.5 | 285.2 | 334.0 | 346.3 | 64.2 | 410.5 | 168.0 | 249.4 | 565.3 | 659.8 |
| VALUE OF BUILDING WORK COMPLETED | | | | | | | | | | |
| 2000-01 | 758.7 | 763.6 | 942.8 | 949.0 | 154.4 | 1 103.4 | 436.3 | 591.5 | 1 526.5 | 1 694.9 |
| 2000-01 | 750.8 | 766.9 | 884.9 | 904.3 | 180.6 | 1 084.9 | 430.7 | 718.7 | 1 489.7 | 1 803.5 |
| 2002-03 | 935.8 | 968.7 | 1 145.4 | 1 181.3 | 227.6 | 1 408.9 | 551.6 | 726.1 | 1 922.6 | 2 135.0 |
| 2000-01 | | | | | | | | | | |
| June | 188.0 | 188.3 | 213.7 | 213.9 | 52.2 | 266.1 | 137.9 | 164.9 | 402.4 | 431.0 |
| 2001-02 | | | | | | | | | | |
| September | 149.9 | 153.2 | 173.1 | 177.6 | 55.0 | 232.6 | 75.5 | 121.1 | 300.5 | 353.7 |
| December | 194.3 | 197.6 | 220.5 | 224.4 | 38.1 | 262.5 | 129.3 | 259.9 | 386.3 | 522.4 |
| March | 174.8 | 177.2 | 231.9 | 234.8 | 39.4 | 274.2 | 83.8 | 127.4 | 353.7 | 401.6 |
| June | 231.7 | 238.9 | 259.4 | 267.4 | 48.1 | 315.6 | 142.1 | 210.3 | 449.2 | 525.9 |
| 2002-03 | | | | | | | | | | |
| September | 209.1 | 219.4 | 240.1 | 252.2 | 45.5 | 297.7 | 111.7 | 164.9 | 396.6 | 462.6 |
| December | 242.1 | 247.2 | 356.7 | 362.6 | 62.1 | 424.7 | 130.0 | 161.6 | 548.5 | 586.4 |
| March | 197.3 | 204.6 | 228.6 | 236.1 | 55.3 | 291.4 | 144.7 | 194.8 | 428.2 | 486.2 |
| June | 287.3 | 297.5 | 320.1 | 330.4 | 64.7 | 395.1 | 165.2 | 204.8 | 549.4 | 599.8 |

Source: Building Activity, Australia (cat. no. 8752.0).

| <i>Period</i> | <i>Pigmeat</i> <i>tonnes</i> | <i>Beef</i> <i>tonnes</i> | <i>Mutton</i> <i>tonnes</i> | <i>Lamb</i> <i>tonnes</i> | <i>Sawn timber</i> <i>m³</i> |
|----------------|---------------------------------|------------------------------|--------------------------------|------------------------------|--|
| 2000-01 | 36 679 | 82 533 | 36 103 | 61 893 | 389 417 |
| 2001-02 | 48 329 | 85 882 | 30 342 | 64 285 | 434 577 |
| 2002-03 | 64 146 | 88 363 | 30 893 | 60 113 | 435 984 |
| 2001-02 | | | | | |
| September | 10 274 | 18 271 | 6 290 | 11 694 | 103 774 |
| December | 9 754 | 21 325 | 8 221 | 17 627 | 111 797 |
| March | 12 583 | 23 748 | 8 895 | 17 232 | 111 697 |
| June | 15 718 | 22 539 | 6 936 | 17 732 | 107 309 |
| 2002-03 | | | | | |
| September | 15 531 | 19 663 | 9 351 | 11 493 | 111 724 |
| December | 14 865 | 23 357 | 10 073 | 14 864 | 110 734 |
| March | 16 345 | 23 930 | 7 521 | 17 947 | 107 267 |
| June | 17 405 | 21 413 | 3 948 | 15 809 | 106 259 |
| 2003-04 | | | | | |
| September | 15 415 | 15 611 | 4 527 | 12 379 | 136 521 |

Source: *Livestock Products, Australia* (cat. no. 7215.0) and ABS data available on request.

16

CONSUMER PRICE INDEX, BY GROUP—ADELAIDE

| <i>Period</i> | <i>Food</i> | <i>Alcohol and tobacco</i> | <i>Clothing and footwear</i> | <i>Housing</i> | <i>House furnishings, supplies and services</i> | <i>Health</i> | <i>Transportation</i> | <i>Communication</i> | <i>Recreation</i> | <i>Education</i> | <i>Miscellaneous</i> | <i>All groups</i> |
|--|-------------|----------------------------|------------------------------|----------------|---|---------------|-----------------------|----------------------|-------------------|------------------|----------------------|-------------------|
| ANNUAL AVERAGE (1989-90 = 100.0) | | | | | | | | | | | | |
| 2000-01 | 136.7 | 198.3 | 111.9 | 104.3 | 117.1 | 169.5 | 138.0 | 104.7 | 122.9 | 225.9 | 159.3 | 133.5 |
| 2001-02 | 143.1 | 207.3 | 111.1 | 108.2 | 120.6 | 173.0 | 135.8 | 105.8 | 126.9 | 235.8 | 165.1 | 137.2 |
| 2002-03 | 149.3 | 214.1 | 112.3 | 115.2 | 122.5 | 183.4 | 139.6 | 109.7 | 131.8 | 246.1 | 171.5 | 142.7 |
| QUARTERLY (1989-90 = 100.0) | | | | | | | | | | | | |
| 2001-02 | | | | | | | | | | | | |
| June | 143.6 | 210.0 | 113.0 | 109.5 | 120.9 | 178.0 | 138.4 | 107.3 | 129.9 | 240.6 | 167.0 | 139.1 |
| 2002-03 | | | | | | | | | | | | |
| September | 145.4 | 210.4 | 111.5 | 112.1 | 121.4 | 178.1 | 138.0 | 109.2 | 131.5 | 240.7 | 171.2 | 140.3 |
| December | 148.1 | 213.3 | 112.2 | 113.0 | 123.2 | 178.1 | 138.8 | 109.6 | 131.5 | 240.7 | 170.9 | 141.5 |
| March | 151.9 | 216.0 | 111.9 | 117.9 | 122.5 | 183.2 | 144.0 | 109.9 | 132.4 | 251.5 | 171.6 | 144.6 |
| June | 151.9 | 216.8 | 113.5 | 117.8 | 122.9 | 194.0 | 137.4 | 110.1 | 131.7 | 251.5 | 172.2 | 144.3 |
| 2003-04 | | | | | | | | | | | | |
| September | 152.8 | 220.0 | 111.4 | 120.2 | 122.2 | 193.9 | 140.7 | 111.0 | 130.7 | 251.8 | 176.5 | 145.4 |
| PERCENTAGE CHANGE FROM SAME QUARTER OF PREVIOUS YEAR | | | | | | | | | | | | |
| 2001-02 | | | | | | | | | | | | |
| June | 3.0 | 3.3 | 0.6 | 4.4 | 1.3 | 3.9 | -1.4 | 3.3 | 6.0 | 4.2 | 3.6 | 3.0 |
| 2002-03 | | | | | | | | | | | | |
| September | 3.5 | 2.2 | 2.9 | 5.0 | 0.7 | 4.2 | 1.2 | 5.4 | 6.8 | 4.2 | 4.7 | 3.7 |
| December | 3.0 | 3.8 | 0.0 | 4.7 | 1.9 | 5.2 | 3.3 | 3.4 | 4.7 | 4.2 | 4.3 | 3.6 |
| March | 5.0 | 3.9 | 1.2 | 8.6 | 2.1 | 5.5 | 7.5 | 3.5 | 2.6 | 4.5 | 3.4 | 5.0 |
| June | 5.8 | 3.2 | 0.4 | 7.6 | 1.7 | 9.0 | -0.7 | 2.6 | 1.4 | 4.5 | 3.1 | 3.7 |
| 2003-2004 | | | | | | | | | | | | |
| September | 5.1 | 4.6 | -0.1 | 7.2 | 0.7 | 8.9 | 2.0 | 1.6 | -0.6 | 4.6 | 3.1 | 3.6 |
| PERCENTAGE CHANGE FROM PREVIOUS QUARTER | | | | | | | | | | | | |
| 2001-02 | | | | | | | | | | | | |
| June | -0.7 | 1.1 | 2.2 | 0.8 | 0.8 | 2.5 | 3.4 | 1.0 | 0.7 | 0.0 | 0.6 | 1.0 |
| 2002-03 | | | | | | | | | | | | |
| September | 1.3 | 0.2 | -1.3 | 2.4 | 0.4 | 0.1 | -0.3 | 1.8 | 1.2 | 0.0 | 2.5 | 0.9 |
| December | 1.9 | 1.4 | 0.6 | 0.8 | 1.5 | 0.0 | 0.6 | 0.4 | 0.0 | 0.0 | -0.2 | 0.9 |
| March | 2.6 | 1.3 | -0.3 | 4.3 | -0.6 | 2.9 | 3.7 | 0.3 | 0.7 | 4.5 | 0.4 | 2.2 |
| June | 0.0 | 0.4 | 1.4 | -0.1 | 0.3 | 5.9 | -4.6 | 0.2 | -0.5 | 0.0 | 0.3 | -0.2 |
| 2002-03 | | | | | | | | | | | | |
| September | 0.6 | 1.5 | -1.9 | 2.0 | -0.6 | -0.1 | 2.4 | 0.8 | -0.8 | 0.1 | 2.5 | 0.8 |

Source: Consumer Price Index (cat. no. 6401.0).

17

ESTIMATED RESIDENT POPULATION AND COMPONENTS OF POPULATION CHANGE(a)

| Period | Net migration | | | Total increase | Population at end of period |
|----------------|------------------|------------|-------------|----------------|-----------------------------|
| | Natural increase | Interstate | Overseas(b) | | |
| 2000-01 | 5 495 | -2 418 | 2 765 | 6 690 | 1 511 728 |
| 2001-02 | 5 772 | 1 602 | 2 798 | 6 968 | 1 518 696 |
| 2002-03 | 5 543 | -1 497 | 4 679 | 8 725 | 1 527 421 |
| 2000-01 | | | | | |
| June | 1 272 | -190 | 46 | 1 342 | 1 511 728 |
| 2001-02 | | | | | |
| September | 1 317 | -575 | 520 | 1 262 | 1 512 990 |
| December | 1 175 | -110 | 1 468 | 2 533 | 1 515 523 |
| March | 1 871 | -470 | 499 | 1 900 | 1 517 423 |
| June | 1 409 | -447 | 311 | 1 273 | 1 518 696 |
| 2002-03 | | | | | |
| September | 948 | 35 | 746 | 1 729 | 1 520 425 |
| December | 1 484 | -655 | 1 221 | 2 050 | 1 522 475 |
| March | 1 704 | -456 | 1 958 | 3 206 | 1 525 681 |
| June | 1 407 | -421 | 754 | 1 740 | 1 527 421 |

(a) Differences between the sum of the components and the total of population growth are attributed to intercensal discrepancy.

(b) Includes category jumping. For further information please see *Demography Working Paper 2003/1—Estimated Resident Population and Measurement of Category Jumping*.

Source: Australian Demographic Statistics (cat. no. 3101.0).

18

BIRTHS, DEATHS, MARRIAGES AND DIVORCES(a)

| Period | Registrations | | | |
|----------------|---------------|--------|-----------|----------|
| | Births | Deaths | Marriages | Divorces |
| 2000-01 | 17 414 | 11 832 | 7 689 | 4 072 |
| 2001-02 | 17 579 | 12 019 | 7 474 | 4 448 |
| 2002-03 | 17 242 | 11 774 | n.y.a. | n.y.a. |
| 2000-01 | | | | |
| June | 4 297 | 3 025 | 1 719 | 1 161 |
| 2001-02 | | | | |
| September | 4 520 | 3 203 | 1 096 | 1 387 |
| December | 4 255 | 3 080 | 2 444 | 1 173 |
| March | 4 556 | 2 685 | 2 135 | 930 |
| June | 4 248 | 2 839 | 1 799 | 958 |
| 2002-03 | | | | |
| September | 4 355 | 3 407 | 1 019 | 1 062 |
| December | 4 327 | 2 843 | 2 419 | n.y.a. |
| March | 4 265 | 2 561 | n.y.a. | n.y.a. |
| June | 4 295 | 2 888 | n.y.a. | n.y.a. |

(a) The quarterly series of Marriage and Divorce numbers has been discontinued. Numbers and rates for both collections are available through the annual ABS publication *Marriages and Divorces* (cat. no. 3310.0).

Source: Australian Demographic Statistics (cat. no. 3101.0).

19

CIVILIAN LABOUR FORCE STATUS(a)

| Period | Employed full-time | | Employed part-time | | Total employed | | Unemployed | | Labour force | |
|--------------------------|--------------------|---------|--------------------|---------|----------------|---------|------------|---------|--------------|---------|
| | Males | Females | Males | Females | Males | Females | Males | Females | Males | Females |
| ANNUAL AVERAGE ('000) | | | | | | | | | | |
| 2000-01 | 322.6 | 156.7 | 54.8 | 143.5 | 377.4 | 300.2 | 32.6 | 20.2 | 410.0 | 320.4 |
| 2001-02 | 319.2 | 153.2 | 59.2 | 153.1 | 378.4 | 306.3 | 31.8 | 20.0 | 410.2 | 326.2 |
| 2002-03 | 331.8 | 159.6 | 56.8 | 156.5 | 388.6 | 316.1 | 27.7 | 19.0 | 416.4 | 335.1 |
| MONTHLY, ORIGINAL ('000) | | | | | | | | | | |
| 2002-03 | | | | | | | | | | |
| September | 327.8 | 154.8 | 63.3 | 158.8 | 391.1 | 313.5 | 26.9 | 21.2 | 418.0 | 334.7 |
| October | 322.4 | 155.4 | 62.2 | 157.5 | 384.6 | 312.9 | 26.2 | 18.9 | 410.8 | 331.8 |
| November | 327.1 | 154.1 | 57.2 | 160.1 | 384.3 | 314.2 | 26.7 | 17.0 | 410.9 | 331.2 |
| December | 337.6 | 162.7 | 56.3 | 154.4 | 393.9 | 317.1 | 24.3 | 17.6 | 418.2 | 334.6 |
| January | 336.0 | 163.1 | 51.0 | 149.4 | 387.0 | 312.5 | 30.5 | 18.8 | 417.5 | 331.4 |
| February | 338.4 | 168.6 | 50.6 | 150.0 | 389.0 | 318.6 | 31.5 | 19.9 | 420.5 | 338.5 |
| March | 331.8 | 166.1 | 59.8 | 158.4 | 391.6 | 324.5 | 26.7 | 20.0 | 418.3 | 344.4 |
| April | 333.2 | 163.6 | 58.7 | 158.6 | 391.9 | 322.2 | 28.8 | 17.9 | 420.6 | 340.0 |
| May | 336.7 | 165.1 | 56.4 | 158.2 | 393.2 | 323.3 | 29.1 | 18.7 | 422.3 | 342.0 |
| June | 340.8 | 160.9 | 54.5 | 161.8 | 395.3 | 322.7 | 27.3 | 19.3 | 422.6 | 342.0 |
| 2003-04 | | | | | | | | | | |
| July | 341.1 | 168.5 | 57.1 | 151.6 | 398.2 | 320.1 | 23.5 | 19.0 | 421.7 | 339.1 |
| August | 335.4 | 160.7 | 60.0 | 157.4 | 395.4 | 318.0 | 23.8 | 20.3 | 419.2 | 338.3 |
| September | 334.6 | 169.0 | 60.5 | 155.0 | 395.1 | 324.0 | 24.7 | 22.4 | 419.8 | 346.4 |
| October | 331.8 | 161.2 | 60.3 | 159.7 | 392.1 | 320.9 | 25.4 | 19.2 | 417.5 | 340.1 |
| November | 333.4 | 156.4 | 60.6 | 160.7 | 394.0 | 317.0 | 26.5 | 20.2 | 420.5 | 337.2 |
| MONTHLY, TREND ('000) | | | | | | | | | | |
| 2002-03 | | | | | | | | | | |
| September | 325.3 | 152.0 | 59.6 | 157.2 | 384.9 | 309.2 | 27.4 | 20.0 | 412.3 | 329.2 |
| October | 327.1 | 153.6 | 59.0 | 156.5 | 386.1 | 310.1 | 26.6 | 19.6 | 412.7 | 329.7 |
| November | 329.2 | 156.2 | 57.8 | 155.8 | 387.0 | 312.0 | 26.3 | 19.1 | 413.4 | 331.1 |
| December | 331.2 | 159.4 | 56.6 | 155.1 | 387.8 | 314.5 | 26.5 | 18.5 | 414.3 | 333.1 |
| January | 333.0 | 162.4 | 55.5 | 155.0 | 388.5 | 317.4 | 27.1 | 18.2 | 415.6 | 335.6 |
| February | 334.7 | 165.0 | 54.8 | 155.2 | 389.5 | 320.2 | 27.8 | 18.0 | 417.3 | 338.2 |
| March | 336.4 | 166.7 | 54.6 | 155.7 | 391.0 | 322.4 | 28.4 | 18.1 | 419.4 | 340.5 |
| April | 337.7 | 167.3 | 55.1 | 156.4 | 392.8 | 323.7 | 28.5 | 18.5 | 421.4 | 342.1 |
| May | 338.5 | 167.1 | 56.0 | 156.9 | 394.5 | 324.0 | 28.1 | 18.9 | 422.6 | 342.9 |
| June | 338.7 | 166.3 | 56.9 | 157.0 | 395.6 | 323.3 | 27.3 | 19.4 | 422.9 | 342.7 |
| 2003-04 | | | | | | | | | | |
| July | 338.2 | 165.2 | 57.8 | 156.9 | 396.0 | 322.1 | 26.5 | 19.9 | 422.5 | 342.0 |
| August | 337.1 | 164.0 | 58.7 | 156.7 | 395.8 | 320.7 | 25.8 | 20.5 | 421.7 | 341.2 |
| September | 335.6 | 162.5 | 59.8 | 156.7 | 395.4 | 319.2 | 25.4 | 21.0 | 420.8 | 340.3 |
| October | 334.2 | 161.0 | 60.6 | 156.9 | 394.8 | 317.9 | 25.2 | 21.5 | 420.0 | 339.4 |
| November | 333.0 | 159.6 | 61.2 | 156.8 | 394.2 | 316.4 | 25.2 | 21.9 | 419.5 | 338.3 |

(a) Population aged 15 years and over.

Source: Labour Force, Australia (cat. no. 6202.0).

| Period | Civilian population | | | Unemployment rate | | | Participation rate | | |
|-------------------|------------------------|--------------------------|--------------------|-------------------|------------------|------------------|--------------------|---------|---------|
| | Males aged 15 and over | Females aged 15 and over | Persons aged 15-19 | Males all ages | Females all ages | Persons all ages | Males | Females | Persons |
| | '000 | '000 | % | % | % | % | % | % | % |
| ANNUAL AVERAGE | | | | | | | | | |
| 2000-01 | 591.6 | 616.9 | 17.9 | 8.0 | 6.3 | 7.2 | 69.3 | 51.9 | 60.4 |
| 2001-02 | 595.4 | 620.5 | 18.5 | 7.8 | 6.1 | 7.1 | 68.9 | 52.6 | 60.6 |
| 2002-03 | 600.7 | 625.5 | 16.8 | 6.7 | 5.7 | 6.2 | 69.3 | 53.6 | 61.3 |
| MONTHLY, ORIGINAL | | | | | | | | | |
| 2002-03 | | | | | | | | | |
| September | 598.9 | 624.0 | 16.6 | 6.4 | 6.3 | 6.4 | 69.8 | 53.6 | 61.5 |
| October | 599.3 | 624.4 | 16.3 | 6.4 | 5.7 | 6.1 | 68.5 | 53.1 | 60.7 |
| November | 599.8 | 624.8 | 14.9 | 6.5 | 5.1 | 5.9 | 68.5 | 53.0 | 60.6 |
| December | 600.2 | 625.2 | 15.5 | 5.8 | 5.3 | 5.6 | 69.7 | 53.5 | 61.4 |
| January | 600.9 | 625.8 | 19.7 | 7.3 | 5.7 | 6.6 | 69.5 | 53.0 | 61.0 |
| February | 601.6 | 626.3 | 18.3 | 7.5 | 5.9 | 6.8 | 69.9 | 54.0 | 61.8 |
| March | 602.3 | 626.9 | 15.9 | 6.4 | 5.8 | 6.1 | 69.4 | 54.9 | 62.0 |
| April | 602.7 | 627.1 | 18.0 | 6.8 | 5.3 | 6.1 | 69.8 | 54.2 | 61.9 |
| May | 603.0 | 627.4 | 20.1 | 6.9 | 5.5 | 6.3 | 70.0 | 54.5 | 62.1 |
| June | 603.4 | 627.6 | 17.4 | 6.5 | 5.6 | 6.1 | 70.0 | 54.5 | 62.1 |
| 2003-04 | | | | | | | | | |
| July | 603.8 | 628.1 | 15.5 | 5.6 | 5.6 | 5.6 | 69.8 | 54.0 | 61.8 |
| August | 604.3 | 628.4 | 18.4 | 5.7 | 6.0 | 5.8 | 69.4 | 53.8 | 61.5 |
| September | 604.7 | 628.9 | 20.1 | 5.9 | 6.5 | 6.1 | 69.4 | 55.1 | 62.1 |
| October | 605.5 | 629.7 | 18.6 | 6.1 | 5.7 | 5.9 | 69.0 | 54.0 | 61.3 |
| November | 606.4 | 630.5 | 15.5 | 6.3 | 6.0 | 6.2 | 69.4 | 53.5 | 61.3 |
| MONTHLY, TREND | | | | | | | | | |
| 2002-03 | | | | | | | | | |
| September | n.a. | n.a. | n.a. | 6.6 | 6.1 | 6.4 | 68.8 | 52.8 | 60.6 |
| October | n.a. | n.a. | n.a. | 6.5 | 5.9 | 6.2 | 68.9 | 52.8 | 60.7 |
| November | n.a. | n.a. | n.a. | 6.4 | 5.8 | 6.1 | 68.9 | 53.0 | 60.8 |
| December | n.a. | n.a. | n.a. | 6.4 | 5.6 | 6.0 | 69.0 | 53.3 | 61.0 |
| January | n.a. | n.a. | n.a. | 6.5 | 5.4 | 6.0 | 69.2 | 53.6 | 61.2 |
| February | n.a. | n.a. | n.a. | 6.7 | 5.3 | 6.1 | 69.4 | 54.0 | 61.5 |
| March | n.a. | n.a. | n.a. | 6.8 | 5.3 | 6.1 | 69.6 | 54.3 | 61.8 |
| April | n.a. | n.a. | n.a. | 6.8 | 5.4 | 6.2 | 69.9 | 54.6 | 62.1 |
| May | n.a. | n.a. | n.a. | 6.7 | 5.5 | 6.1 | 70.1 | 54.6 | 62.2 |
| June | n.a. | n.a. | n.a. | 6.5 | 5.7 | 6.1 | 70.1 | 54.6 | 62.2 |
| 2003-04 | | | | | | | | | |
| July | n.a. | n.a. | n.a. | 6.3 | 5.8 | 6.1 | 70.0 | 54.5 | 62.1 |
| August | n.a. | n.a. | n.a. | 6.1 | 6.0 | 6.1 | 69.8 | 54.3 | 61.9 |
| September | n.a. | n.a. | n.a. | 6.0 | 6.2 | 6.1 | 69.6 | 54.1 | 61.7 |
| October | n.a. | n.a. | n.a. | 6.0 | 6.3 | 6.1 | 69.4 | 53.9 | 61.5 |
| November | n.a. | n.a. | n.a. | 6.0 | 6.5 | 6.2 | 69.2 | 53.7 | 61.3 |

(a) Population aged 15 years and over.

Source: Labour Force, Australia (cat. no. 6202.0).

21

AVERAGE WEEKLY EARNINGS OF EMPLOYEES

| Period | Males | | | Females | | | Persons | | |
|-----------------------------------|--|---|-----------------------------------|--|---|-------------------------------------|--|---|---------------------------------------|
| | Full-time adult ordinary time earnings | Full-time adult total earnings | All males total earnings | Full-time adult ordinary time earnings | Full-time adult total earnings | All females total earnings | Full-time adult ordinary time earnings | Full-time adult total earnings | All employees total earnings |
| ANNUAL AVERAGE (\$ per week) | | | | | | | | | |
| 2000-01 | 811.30 | 864.40 | 746.80 | 685.20 | 703.90 | 491.20 | 765.70 | 806.40 | 619.70 |
| 2001-02 | 830.20 | 890.18 | 775.00 | 731.10 | 744.33 | 505.18 | 797.18 | 841.68 | 643.75 |
| 2002-03 | 864.85 | 914.08 | 790.10 | 772.03 | 785.75 | 530.28 | 833.75 | 871.05 | 667.48 |
| QUARTERLY, ORIGINAL (\$ per week) | | | | | | | | | |
| 2001-02 | | | | | | | | | |
| May | 829.40 | 899.40 | 783.50 | 735.10 | 749.80 | 503.80 | 799.40 | 851.80 | 649.90 |
| 2002-03 | | | | | | | | | |
| August | 829.90 | 877.40 | 765.50 | 757.20 | 770.30 | 543.20 | 805.50 | 841.40 | 661.80 |
| November | 851.10 | 902.10 | 781.00 | 755.80 | 769.30 | 527.20 | 818.90 | 857.20 | 662.40 |
| February | 884.60 | 933.00 | 810.50 | 781.60 | 795.60 | 550.70 | 850.90 | 888.00 | 692.30 |
| May | 893.80 | 943.80 | 803.40 | 793.50 | 807.80 | 500.00 | 859.70 | 897.60 | 653.40 |
| August | 895.00 | 942.60 | 773.80 | 803.70 | 817.80 | 504.50 | 863.90 | 900.10 | 643.20 |
| QUARTERLY, TREND (\$ per week) | | | | | | | | | |
| 2001-02 | | | | | | | | | |
| May | 828.50 | 892.40 | 774.10 | 744.30 | 757.90 | 513.50 | 801.00 | 848.30 | 649.10 |
| 2002-03 | | | | | | | | | |
| August | 835.80 | 892.80 | 776.80 | 750.50 | 763.90 | 527.90 | 807.50 | 850.20 | 660.70 |
| November | 853.70 | 903.20 | 786.70 | 761.70 | 775.50 | 537.50 | 823.10 | 860.80 | 671.70 |
| February | 875.90 | 923.30 | 796.40 | 777.30 | 791.50 | 531.90 | 842.80 | 879.20 | 671.90 |
| May | 892.70 | 941.40 | 798.40 | 793.50 | 807.60 | 517.70 | 859.30 | 896.10 | 663.00 |
| August | 903.50 | 954.40 | 792.20 | 809.70 | 822.80 | 500.90 | 871.90 | 909.70 | 648.90 |

Source: Average Weekly Earnings, States and Australia (cat. no. 6302.0).

22

SECURED HOUSING FINANCE COMMITMENTS(a)

| Period | Original | | Seasonally adjusted | | Trend | |
|----------------|----------------|-------|---------------------|-------|----------------|-------|
| | Dwelling units | Value | Dwelling units | Value | Dwelling units | Value |
| | no. | \$m | no. | \$m | no. | \$m |
| 2002-03 | | | | | | |
| August | 4 166 | 476 | 4 329 | 504 | 4 386 | 500 |
| September | 3 825 | 454 | 4 145 | 497 | 4 280 | 499 |
| October | 4 329 | 517 | 4 220 | 502 | 4 188 | 498 |
| November | 4 336 | 529 | 4 101 | 495 | 4 155 | 500 |
| December | 4 322 | 539 | 4 161 | 504 | 4 200 | 509 |
| January | 3 765 | 465 | 4 278 | 520 | 4 305 | 527 |
| February | 4 112 | 508 | 4 418 | 538 | 4 441 | 550 |
| March | 4 814 | 617 | 4 707 | 595 | 4 577 | 577 |
| April | 4 583 | 580 | 4 676 | 600 | 4 697 | 601 |
| May | 5 089 | 671 | 4 818 | 636 | 4 793 | 622 |
| June | 4 975 | 649 | 4 869 | 643 | 4 867 | 642 |
| 2003-04 | | | | | | |
| July | 5 328 | 675 | 4 936 | 649 | 4 935 | 662 |
| August | 4 611 | 627 | 4 935 | 675 | 5 005 | 685 |
| September | 4 950 | 655 | 5 090 | 689 | 5 071 | 708 |
| October | 5 253 | 794 | 5 208 | 782 | 5 135 | 730 |

(a) Excludes alterations and additions. Includes refinancing.

Source: Housing Finance for Owner Occupation, Australia (cat. no. 5609.0).

23

FINANCE COMMITMENTS

| Period | Commercial finance commitments | | | Personal finance commitments | | | Total lease finance commitments |
|----------------|--------------------------------|-----------------------------|--------------------------------------|------------------------------|-----------------------------|------------------------------------|---------------------------------|
| | Fixed loan facilities | Revolving credit facilities | Total commercial finance commitments | Fixed loan facilities | Revolving credit facilities | Total personal finance commitments | |
| | \$m | \$m | \$m | \$m | \$m | \$m | |
| 2002-03 | | | | | | | |
| July | 593.0 | 413.3 | 1 006.3 | 198.3 | 180.2 | 378.5 | 15.2 |
| August | 524.6 | 484.1 | 1 008.7 | 195.7 | 180.2 | 375.9 | 12.3 |
| September | 524.0 | 433.9 | 957.9 | 180.2 | 150.1 | 330.4 | 13.4 |
| October | 545.4 | 372.3 | 917.7 | 190.4 | 182.3 | 372.8 | 14.2 |
| November | 519.2 | 341.6 | 860.8 | 199.1 | 190.1 | 389.2 | 12.8 |
| December | 706.9 | 373.0 | 1 079.9 | 210.0 | 204.9 | 414.9 | 14.2 |
| January | 616.6 | 272.2 | 888.9 | 210.5 | 147.3 | 357.8 | 15.3 |
| February | 469.0 | 244.5 | 713.5 | 210.0 | 155.4 | 365.4 | 13.6 |
| March | 589.7 | 289.8 | 879.5 | 218.9 | 204.8 | 423.6 | 17.3 |
| April | 602.5 | 208.2 | 810.7 | 212.2 | 186.4 | 398.6 | 13.1 |
| May | 571.8 | 269.8 | 841.6 | 234.1 | 205.9 | 440.0 | 15.5 |
| June | 785.8 | 316.2 | 1 102.0 | 239.1 | 210.9 | 450.0 | 18.6 |
| 2003-04 | | | | | | | |
| July | 651.5 | 452.7 | 1 104.2 | 234.9 | 222.6 | 457.5 | 16.6 |
| August | 612.7 | 314.8 | 927.5 | 205.8 | 213.6 | 419.4 | 13.1 |
| September | 606.3 | 344.8 | 951.2 | 218.0 | 208.9 | 426.9 | 14.9 |

Source: ABS data available on request.

SOURCES FOR SUMMARY TABLES (TABLES 1 AND 2)

- (1) *Australian National Accounts: National Income, Expenditure and Product*, cat. no. 5206.0—and ABS data available on request
- (2) International Merchandise Trade, ABS data available on request
- (3) *Retail Trade, Australia*, cat. no. 8501.0, Monthly
- (4) *Sales of New Motor Vehicles, Australia*, cat. no. 9314.0.55.001 Monthly
- (5) *Private New Capital Expenditure, Australia*, cat. no. 5625.0, Quarterly—and Ausstats data
- (6) *Tourist Accommodation, Australia*, cat. no. 8635.0, Quarterly
- (7) *Building Approvals, Australia*, cat. no. 8731.0, Monthly
- (8) *Building Activity, Australia*, cat. no. 8752.0, Quarterly
- (9) *Engineering Construction Activity, Australia*, cat. no. 8762.0, Quarterly
- (10) *Manufacturing Production, Australia, Preliminary*, cat. no. 8301.0, Quarterly
- (11) *Livestock Products, Australia*, cat. no. 7215.0, Quarterly—and ABS data available on request
- (12) *Actual and Expected Private Mineral Exploration, Australia*, cat. no. 8412.0, Quarterly
- (13) *Consumer Price Index*, cat. no. 6401.0, Quarterly
- (14) *Producer Price Indexes, Australia*, cat. no. 6427.0, Quarterly
- (15) *House Price Indexes: Eight Capital Cities*, cat. no. 6416.0, Quarterly
- (16) *Australian Demographic Statistics*, cat. no. 3101.0, Quarterly
- (17) *Labour Force, Australia, Preliminary*, cat. no. 6202.0, Monthly
- (18) *Job Vacancies, Australia*, cat. no. 6354.0, Quarterly
- (19) *Industrial Disputes, Australia*, cat. no. 6321.0, Monthly
- (20) *Average Weekly Earnings, States and Australia*, cat. no. 6302.0, Quarterly
- (21) *Wage Cost Index, Australia*, cat. no. 6345.0, Quarterly
- (22) *Housing Finance for Owner Occupation, Australia*, cat. no. 5609.0, Monthly
- (23) *Lending Finance, Australia*, cat. no. 5671.0, Monthly—and ABS data available on request
- (24) *Reserve Bank of Australia Bulletin*

FOR MORE INFORMATION...

- INTERNET* **www.abs.gov.au** the ABS web site is the best place to start for access to summary data from our latest publications, information about the ABS, advice about upcoming releases, our catalogue, and Australia Now—a statistical profile.
- LIBRARY* A range of ABS publications is available from public and tertiary libraries Australia-wide. Contact your nearest library to determine whether it has the ABS statistics you require, or visit our web site for a list of libraries.
- CPI INFOLINE* For current and historical Consumer Price Index data, call 1902 981 074 (call cost 77c per minute).
- DIAL-A-STATISTIC* For the latest figures for National Accounts, Balance of Payments, Labour Force, Average Weekly Earnings, Estimated Resident Population and the Consumer Price Index call 1900 986 400 (call cost 77c per minute).

INFORMATION SERVICE

Data which have been published and can be provided within five minutes are free of charge. Our information consultants can also help you to access the full range of ABS information—ABS user-pays services can be tailored to your needs, time frame and budget. Publications may be purchased. Specialists are on hand to help you with analytical or methodological advice.

- PHONE* **1300 135 070**
- EMAIL* **client.services@abs.gov.au**
- FAX* 1300 135 211
- POST* Client Services, ABS, GPO Box 796, Sydney 2001

WHY NOT SUBSCRIBE?

ABS subscription services provide regular, convenient and prompt deliveries of ABS publications and products as they are released. Email delivery of monthly and quarterly publications is available.

- PHONE* 1300 366 323
- EMAIL* subscriptions@abs.gov.au
- FAX* 03 9615 7848
- POST* Subscription Services, ABS, GPO Box 2796Y, Melbourne 3001



2130740001048
ISSN 1039-8880

RRP \$21.00